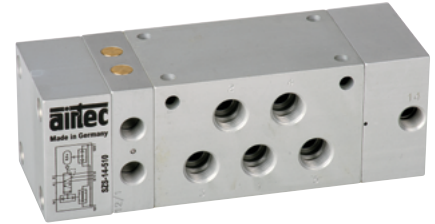
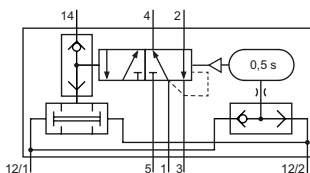


Technical details

Temperature range	-10°C ... +70°C
Medium	Filtered, oil-free and dried compressed air according to ISO 8573-1:2010, Class 7:2:4, instrument air, free of aggressive additives. Alternatively the pressure dew point must be at least 10°C below lowest occurring ambient temperature.
Materials	Body: Al (anodized), seals: NBR and POM, inner parts: Al, stainless steel and brass



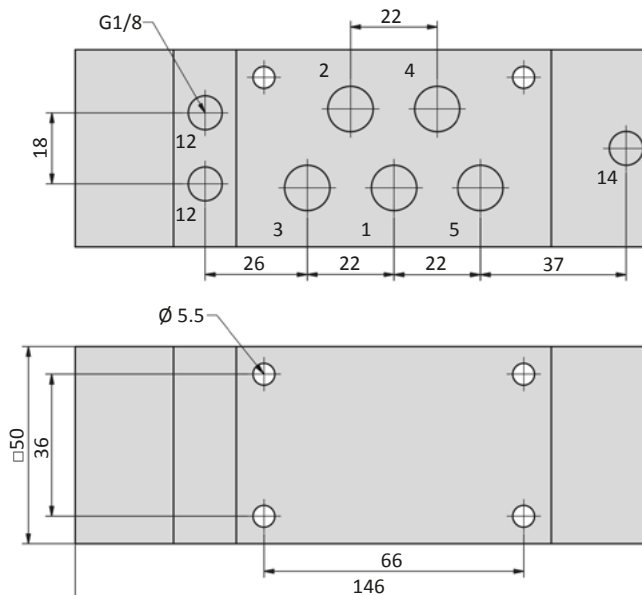
The valve operates after two input signals at 12 arriving within 0.5 s. The valve is actuated as long as the signals continue. If the input signals do not arrive within 0.5 s, the valve does not operate. Both signals must be reset before the valve switches back on. In addition, it has a self-locking device. A signal to 14 actuates the two-signal-control as a standard 5/2-valve. When the signal at 14 ends, the valve resets.

5/2-way-valve


SZS-14-510
two-signal controls,
5/2-way

Technical data

Model-no.:	SZS-14-510
Connection	G1/4
Nominal size (mm)	8
Operating pressure (bar)	4 ... 10
Pilot pressure (bar)	4 ... 10
Flow rate (NI/min)	1300
Weight (kg)	0.885

Dimensions
SZS-14-510


- 1 = pressure inlet
- 2 = outlets
- 3 = exhausts
- 12 = signal port
- 14 = signal port