

Technical details

Temperature range	-10°C ... +50°C
Medium	Filtered, oil-free and dried compressed air according to ISO 8573-1:2010, Class 7:2:4, instrument air, free of aggressive additives. Alternatively the pressure dew point must be at least 10°C below lowest occurring ambient temperature.
Materials	Body: Al (anodized), seals: NBR
Protection	IP 65 according to EN 60529



Manifold system with integrated electrical connection including LED indicators, manual override and built-in circuit protection. Valves with connection G 1/4 require 2 stations on the manifold. The above order code covers only the manifold. The multi-pin plug with cable must be ordered separately. The valve terminal is delivered pre-assembled and function-tested. If not specified with the order, valve configuration is as follows: Valves are mounted according to their order number, starting with high numbers at the side of the multi-pin, ending with low numbers on the opposite side, followed by blind plates (if ordered).

Order code

Series		Electrical options	
Number of stations		M-1	Multi-pin
04*	4 stations	AS3	AS-Interface (only for 4, 8 and 12 stations)
06	6 stations	B1-1	Profibus-DP
08	8 stations		
10	10 stations		
12	12 stations		
14	14 stations		
16	16 stations		
18	18 stations		
20	20 stations		
22	22 stations		
24**	24 stations		

* not for Profibus-DP
** not for Multi-pin



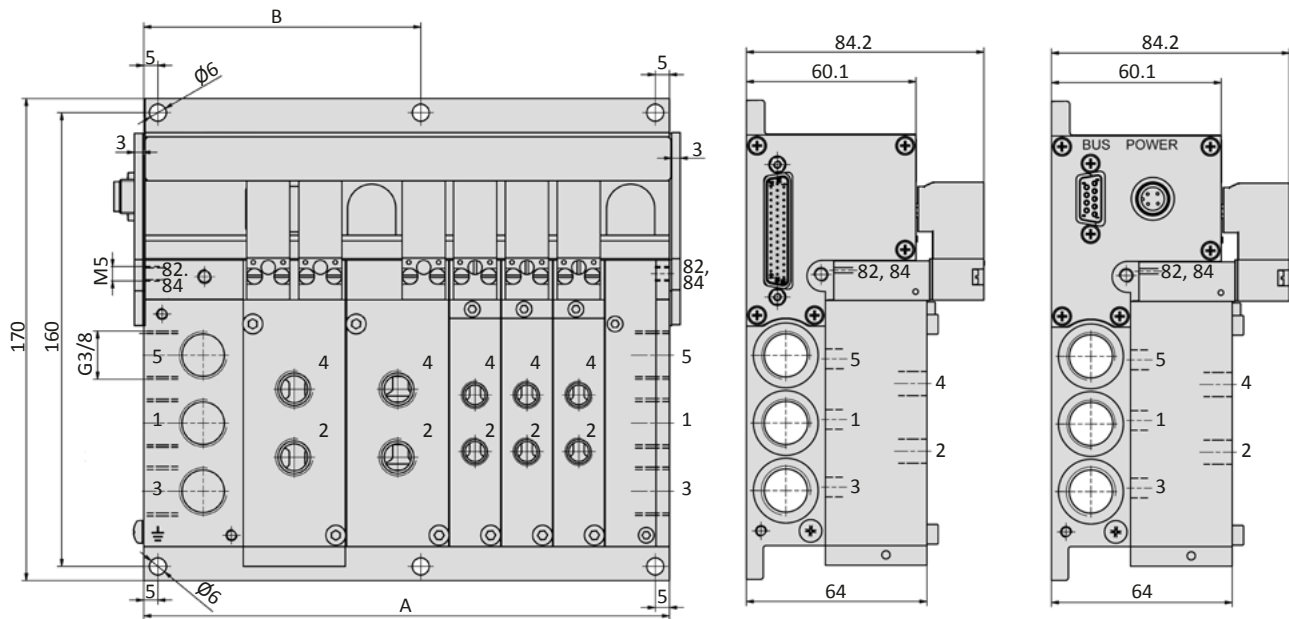
More detailed information about the installation you find in the manual at www.airtec.de.

Series RE-19

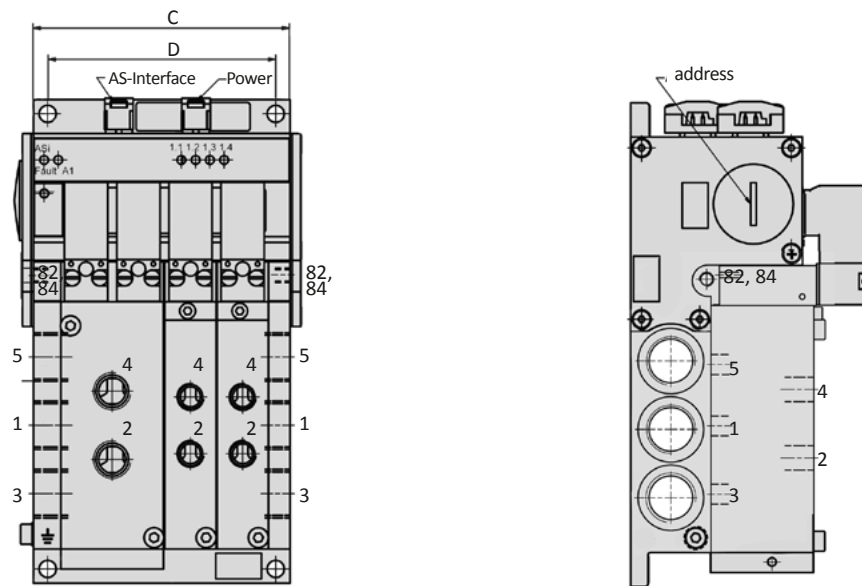


Dimensions

Multi-pin, Profibus-DP



AS-Interface



- 1 = pressure inlet
- 2,4 = outlets
- 3,5 = exhausts
- 82,84 = solenoid exhausts

Model-no.:		A	B	Weight without valves (kg)
RE-19/04-M-1		113	-	0.93
RE-19/06-M-1	RE-19/06-B-1	149	-	1.26
RE-19/08-M-1	RE-19/08-B-1	186	-	1.59
RE-19/10-M-1	RE-19/10-B-1	222	-	1.92
RE-19/12-M-1	RE-19/12-B-1	259	129.5	2.25
RE-19/14-M-1	RE-19/14-B-1	295	147.5	2.58
RE-19/16-M-1	RE-19/16-B-1	332	166	2.91
RE-19/18-M-1	RE-19/18-B-1	369	184.5	3.24
RE-19/20-M-1	RE-19/20-B-1	405	202.5	3.57
RE-19/22-M-1	RE-19/22-B-1	442	221	3.90
	RE-19/24-B-1	478	239	4.23

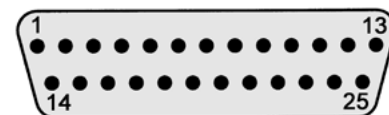
Model-no.:	C	D	Weight without valves (kg)
RE-19/04-AS3	96	80	0.82
RE-19/08-AS3	165	155	1.48
RE-19/12-AS3	228	238	2.14

Electrical options

Multi-pin

The 25-pin multi plug (see page 7-07) has to be ordered separately.

Pin	Function	Wire color	Pin	Function	Wire color
1	valve 1	white	14	valve 14	brown/ green
2	valve 2	brown	15	valve 15	white/ yellow
3	valve 3	green	16	valve 16	yellow/ brown
4	valve 4	yellow	17	valve 17	white/ grey
5	valve 5	grey	18	valve 18	grey/ brown
6	valve 6	pink	19	valve 19	white/ pink
7	valve 7	blue	20	valve 20	pink/ brown
8	valve 8	red	21	valve 21	white/ blue
9	valve 9	black	22	valve 22	brown/ blue
10	valve 10	violet	23	GND	white/ red
11	valve 11	grey/ pink	24	GND	brown/ red
12	valve 12	red/ blue	25	GND	white/ black
13	valve 13	white/ green			



Profibus-DP

Bus connector	bushing 9-pin D-SUB
Power connector	plug 4-pin M12
Baud rate	selectable between 9600 Bit/s and 12 Mbit/s
Voltage	24 V DC \pm 10%
Address selection	by 2 decimal coded rotary switches.
Bus terminal resistance	switchable ON - OFF






7

AS-Interface

Bus connector	AS-Interface connector
Power connector	AS-Interface connector
Bus-Voltage	18.5 ... 31.6 V DC
Power-Voltage	24 V DC \pm 10%
Address selection	Each IC slave (max. 4 valves) 1 programming socket = 1 address



Accessories

Model-no.:	RE-19-DT	Model-no.:	28-ST-68-M-xxx
	Pressure dividing plug		25-pin multi plug, straight
		xxx = 105	5 m cable
		xxx = 110	10 m cable
Model-no.:	RE-19-V-EP		
	Blind plate		

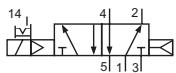
Technical details

Outlets	G1/8, G1/4
Temperature range	-10°C ... +50°C
Medium	Filtered, oil-free and dried compressed air according to ISO 8573-1:2010, Class 7:2:4, instrument air, free of aggressive additives. Alternatively the pressure dew point must be at least 10°C below lowest occurring ambient temperature.
Materials	Body: Al (anodized), seals: NBR, inner parts: Al, stainless steel and brass
Nominal voltage	24 V DC, ± 10%
Power consumption	1 W
Protection	IP 65 according to EN 60529

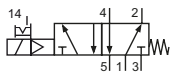


Electrically operated spool valve. The manual override is non-detent or detent and is operated by bolt or screw driver.

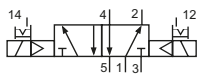
5/2-way-valves



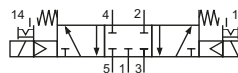
KF-09-510-HNx-442
KF-10-510-HNx-442
5/2-way, single solenoid, air spring return



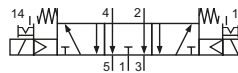
KF-09-511-HNx-442
KF-10-511-HNx-442
5/2-way, single solenoid, mechanical spring return



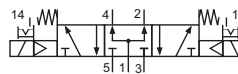
KF-10-520-HNx-442
5/2-way, double solenoid



KF-10-530-HNx-442
5/3-way, center position closed



KF-10-533-HNx-442
5/3-way, center position exhausted



KF-10-534-HNx-442
5/3-way, center position pressurized

Please complete: x = manual override (R = detent, T = non-detent)

Technical data

Model-no.:	KF-09-510-HNx-442	KF-09-511-HNx-442	KF-10-510-HNx-442	KF-10-511-HNx-442
Required space	1 station	1 station	2 stations	2 stations
Outlets	G1/8	G1/8	G1/4	G1/4
Operating pressure (bar)	3...8	3...8	2.5...8	2.5...8
Pilot pressure (bar)	3...8	3...8	2.5...8	2.5...8
Nominal size (mm)	6	6	9	9
Flow rate (NI/min)	950	810	2100	1800
Response time (ms) at 6 bar	on: 11 off: 20	on: 10 off: 26	on: 13 off: 26	on: 18 off: 29
Weight (kg)	0.200	0.200	0.370	0.370

Model-no.:	KF-10-520-HNx-442	KF-10-530-HNx-442	KF-10-533-HNx-442	KF-10-534-HNx-442
Required space	2 stations	2 stations	2 stations	2 stations
Outlets	G1/4	G1/4	G1/4	G1/4
Operating pressure (bar)	2.5...8	3...8	3...8	3...8
Pilot pressure (bar)	2.5...8	3...8	3...8	3...8
Nominal size (mm)	9	9	9	9
Flow rate (NI/min)	2100	1500	1500	1500
Response time (ms) at 6 bar	on: 16 off: 16	on: 16 off: 26	on: 16 off: 26	on: 16 off: 26
Weight (kg)	0.430	0.430	0.430	0.430

Please complete: x = manual override (R = detent, T = non-detent)