

**Technical details**

<b>Temperature range</b>	+5°C ... +50°C
<b>Medium</b>	Filtered, oil-free and dried compressed air according to ISO 8573-1:2010, Class 7:2:4, instrument air, free of aggressive additives. Alternatively the pressure dew point must be at least 10°C below lowest occurring ambient temperature.
<b>Materials</b>	Body: Al (anodized), plastic, seals: NBR, FKM
<b>Protection</b>	IP 65 according to EN 60529



Manifold system with integrated electrical connection including LED indicators. Each station can accommodate two 3/2-way valves or one 5/2- or 5/3-way valve. All connections are accessible from the front. The valves and the multi-pin plug with cable must be ordered separately. The manifold can be mounted with 4 M5 screws from bottom or from top using the mounting bracket RE-10-B-01 or on a DIN-rail (screws are included). The valve terminal is delivered pre-assembled and function-tested. If not specified with the order, valve configuration is as follows: Valves are mounted according to their order number, starting with high numbers on the side of the multi-pin, ending with low numbers on the opposite side, followed by blind plates (if ordered).

**Order code**

Series		Pneumatical connections	
<p><b>RE-10/**-***-***</b></p>		040	tube connection Ø 4 at 2 and 4 G1/4 at 1
<p>Number of stations</p>		041	tube connection Ø 4 at 2 and 4 tube connection Ø 8 at 1
04	4 stations	042	tube connection Ø 4 at 2 and 4 tube connection Ø 10 at 1
06*	6 stations	060	tube connection Ø 6 at 2 and 4 G1/4 at 1
08	8 stations	061	tube connection Ø 6 at 2 and 4 tube connection Ø 8 at 1
10*	10 stations	062	tube connection Ø 6 at 2 and 4 tube connection Ø 10 at 1
12	12 stations		
	* only for Multi-pin	<p>Electrical options</p>	
		M-1	Multi-pin
		B1	Profibus-DP
		B6	CANopen

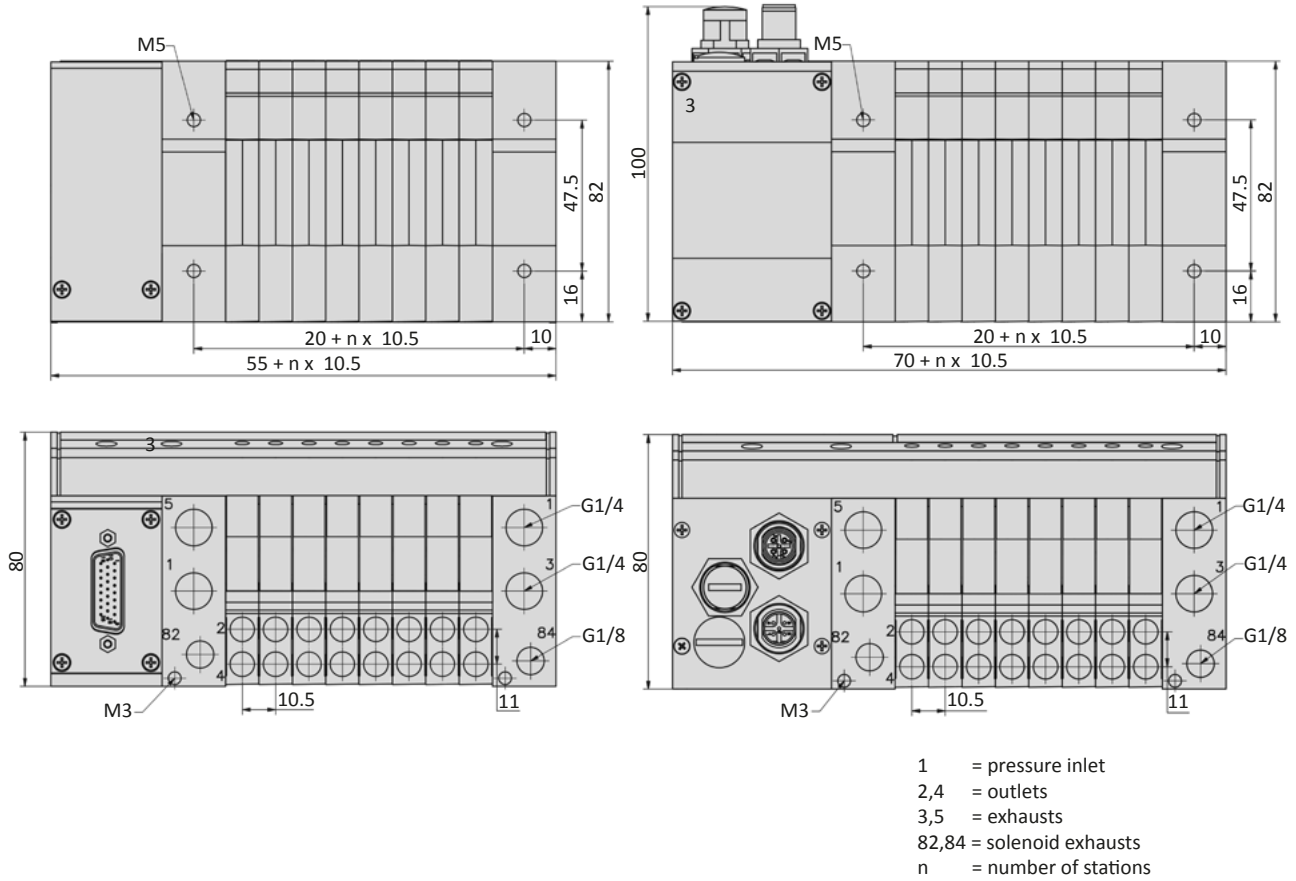


More detailed information about the installation you find in the manual at [www.airtec.de](http://www.airtec.de).

Dimensions

Multi-pin

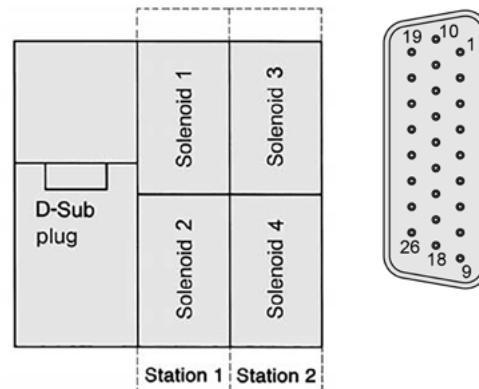
Bus connection



**Electrical options**
**Multi-pin**

The 26-pin multi plug (see page 7-13) has to be ordered separately.

Pin	Function	Wire color	Pin	Function	Wire color
1	solenoid 1	white	14	solenoid 14	brown/ green
2	solenoid 2	brown	15	solenoid 15	white/ yellow
3	solenoid 3	green	16	solenoid 16	yellow/ brown
4	solenoid 4	yellow	17	solenoid 17	white/ grey
5	solenoid 5	grey	18	solenoid 18	grey/ brown
6	solenoid 6	pink	19	solenoid 19	white/ pink
7	solenoid 7	blue	20	solenoid 20	pink/ brown
8	solenoid 8	red	21	solenoid 21	white/ blue
9	solenoid 9	black	22	solenoid 22	brown/ blue
10	solenoid 10	violet	23	solenoid 23	white/ red
11	solenoid 11	grey/ pink	24	solenoid 24	brown/ red
12	solenoid 12	red/ blue	25	GND	white/ black
13	solenoid 13	white/ green	26	-	-


**Profibus-DP**

<b>Bus connector</b>	Bus In: plug M12 5-pin B-code Bus Out: socket M12 5-pin B-code
<b>Power connector</b>	plug M12 5-pin A-code
<b>Baud rate</b>	9.6 Kbit/s ... 12 Mbit/s
<b>Voltage</b>	24 V DC $\pm$ 10%
<b>Power consumption</b>	4.3 W
<b>Address selection</b>	by 2 decimal coded rotary switches.
<b>Bus terminal resistance</b>	external over Bus Out socket


**CANopen**

<b>Bus connector</b>	Bus In: plug M12 5-pin A-code Bus Out: socket M12 5-pin A-code
<b>Power connector</b>	plug M12 4-pin A-code
<b>Baud rate</b>	10 Kbit/s ... 1 Mbit/s
<b>Voltage</b>	24 V DC $\pm$ 10%
<b>Power consumption</b>	4.3 W
<b>Address selection</b>	by 2 decimal coded rotary switches.
<b>Bus terminal resistance</b>	external over Bus Out socket



# Series RE-10

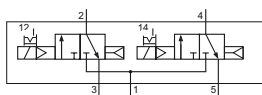
## Technical details

<b>Outlets</b>	according to the pneumatically connections of the terminal
<b>Nominal size</b>	4 mm
<b>Temperature range</b>	+5°C ... +50°C
<b>Medium</b>	Filtered, oil-free and dried compressed air according to ISO 8573-1:2010, Class 7:2:4, instrument air, free of aggressive additives. Alternatively the pressure dew point must be at least 10°C below lowest occurring ambient temperature.
<b>Materials</b>	Body: Al (anodized), plastic, seals: NBR, FKM, PU inner parts: Al, stainless steel and brass
<b>Nominal voltage</b>	24 V DC, ± 10%
<b>Power consumption</b>	0.8 W
<b>Protection</b>	IP 65 according to EN 60529

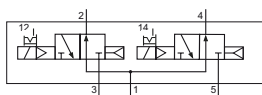


Electrically operated spool valve. The manual override is non-detent. The manual override is located on top of the terminal cover.

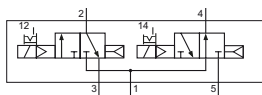
## 2 x 3/2-way-valves



**LF-10-310/2-HN-412**  
2 x 3/2-way, single solenoid, air spring return, NC

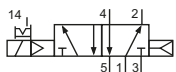


**LF-10-312/2-HN-412**  
2 x 3/2-way, single solenoid, air spring return, NO

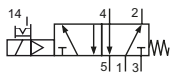


**LF-10-314/2-HN-412**  
2 x 3/2-way, single solenoid, air spring return, 1 x NC, 1 x NO

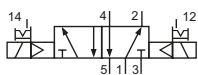
## 5/2-way-valves



**LF-10-510-HN-412**  
5/2-way, single solenoid, air spring return

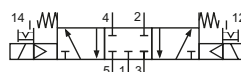


**LF-10-511-HN-412**  
5/2-way, single solenoid, mechanical spring return

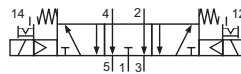


**LF-10-520-HN-412**  
5/2-way, double solenoid

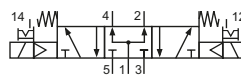
## 5/3-way-valves



**LF-10-530-HN-412**  
5/3-way, center position closed



**LF-10-533-HN-412**  
5/3-way, center position exhausted



**LF-10-534-HN-412**  
5/3-way, center position pressurized

## Technical data






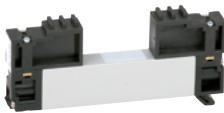
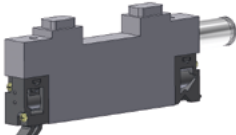
Model-no.:	LF-10-310/2-HN-412	LF-10-312/2-HN-412	LF-10-314/2-HN-412
<b>Operating pressure (bar)</b>	1.5...8	1.5...8	1.5...8
<b>Pilot pressure (bar)</b>	1.5...8	1.5...8	1.5...8
<b>Flow rate (NI/min)</b>	300	220	300 / 220 (NC / NO)
<b>Response time (ms) at 6 bar</b>	on: 14 off: 22	on: 14 off: 22	on: 14 off: 22
<b>Weight (kg)</b>	0.050	0.050	0.050

**Technical data**

<b>Model-no.:</b>	LF-10-510-HN-412	LF-10-511-HN-412	LF-10-520-HN-412
<b>Operating pressure (bar)</b>	1.5...8	3...8	1.5...8
<b>Pilot pressure (bar)</b>	1.5...8	3...8	1.5...8
<b>Flow rate (NI/min)</b>	300	300	300
<b>Response time (ms) at 6 bar</b>	on: 18 off: 28	on: 14 off: 30	on: 15 off: 15
<b>Weight (kg)</b>	0.044	0.042	0.052

<b>Model-no.:</b>	LF-10-530-HN-412	LF-10-533-HN-412	LF-10-534-HN-412
<b>Operating pressure (bar)</b>	3.5...8	3.5...8	3.5...8
<b>Pilot pressure (bar)</b>	3.5...8	3.5...8	3.5...8
<b>Flow rate (NI/min)</b>	280	280	300
<b>Response time (ms) at 6 bar</b>	on: 20 off: 30	on: 16 off: 30	on: 16 off: 30
<b>Weight (kg)</b>	0.050	0.050	0.050

**Accessories**

<b>Model-no.:</b>	RE-10-DT-01	<b>Model-no.:</b>	28-ST-10-M1-26-xxx
	Pressure dividing plug P-canal		26-pin multi plug, straight xxx = 105 5 m cable xxx = 110 10 m cable
<b>Model-no.:</b>	RE-10-MS-01	<b>Model-no.:</b>	28-ST-RE-46-xx-yy
	Kit for DIN-rail mounting		Connector kit xx = 01 in- and output xx = 02 with termination resistance yy = B1 Profibus yy = B6 CANopen
<b>Model-no.:</b>	RE-10-B-01		
	Mounting bracket (pair)		
<b>Model-no.:</b>	RE-10-V-EP		
	Blind plate		
<b>Model-no.:</b>	RE-10-P-01		
	Device for additional air supply		