

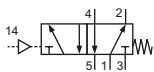
Technical details

Connection	PKX-09: G1/8 PKX-10: G1/4
Nominal size	PKX-09: 6 mm PKX-10: 9 mm
Temperature range	-30°C ... +80°C
Medium	Filtered, oil-free and dried compressed air according to ISO 8573-1:2010, Class 7:2:4, instrument air, free of aggressive additives. Alternatively the pressure dew point must be at least 10°C below lowest occurring ambient temperature.
Materials	Body: stainless steel 1.4571, seals: FKM and PU, inner parts: stainless steel 1.4305
Protection	IP 65 according to EN 60529
	Valves in accordance with 2014/34/EU (ATEX) available. (Chapter 13)

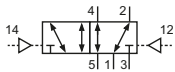


Pneumatically operated spool valve. The valve switches upon pressurization of the pilot port.

5/2-way-valves

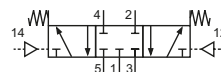


PKX-09-511
PKX-10-511
5/2-way, single pilot, mechanical spring return



PKX-09-520
PKX-10-520
5/2-way, double pilot

5/3-Wege-Ventil



PKX-10-530
5/3-way, center position closed

Technical data

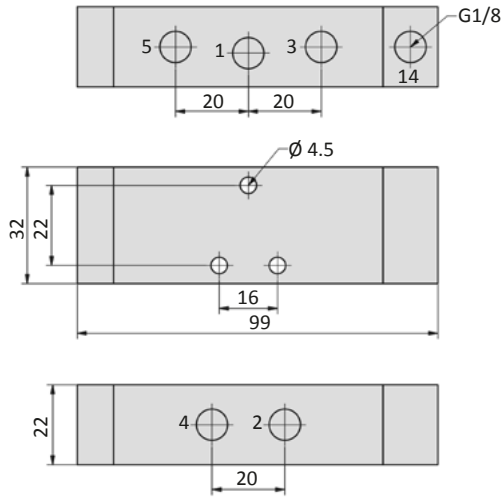
Model-no.:	PKX-09-511	PKX-09-520	PKX-10-511	PKX-10-520	PKX-10-530
Operating pressure (bar)	3 ... 8	3 ... 8	3 ... 8	3 ... 8	3 ... 8
Pilot pressure (bar)	3 ... 8	3 ... 8	3 ... 8	3 ... 8	3 ... 8
Flow rate (NI/min)	1080	1110	1980	1920	1770
Weight (kg)	0.450	0.460	1.120	1.170	1.160

Series PKX-09 and PKX-10

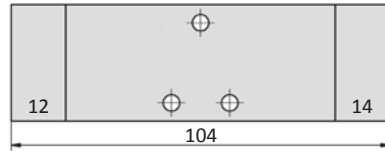


Dimensions

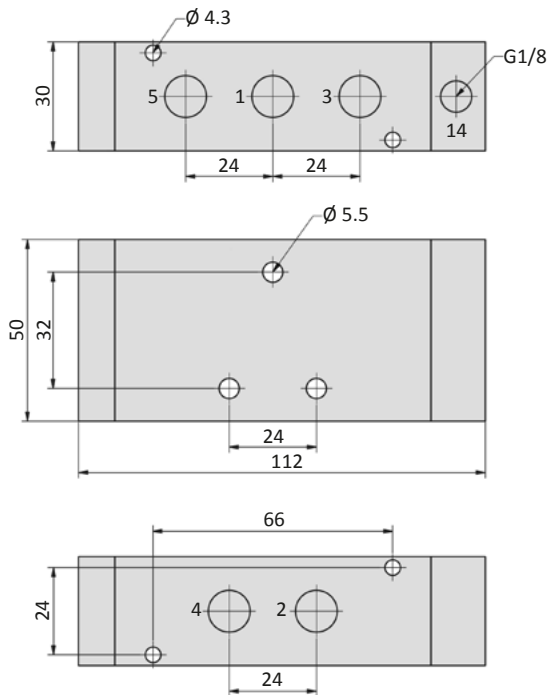
PKX-09-511



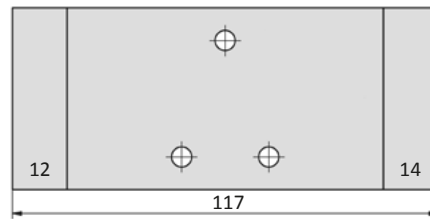
PKX-09-520



PKX-10-511



PKX-10-520, PKX-10-530



- 1 = pressure inlet
 - 2,4 = outlets
 - 3,5 = exhausts
 - 12,14 = pilot ports
- Pilot ports can be repositioned by 180°.