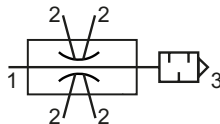


**Technical details**

|                          |   |
|--------------------------|---|
| <b>Temperature range</b> | 0°C ... +60°C   |
| <b>Medium</b>            | Filtered, oil-free and dried compressed air according to ISO 8573-1:2010, Class 7:2:4, instrument air, free of aggressive additives. Alternatively the pressure dew point must be at least 10°C below lowest occurring ambient temperature. |
| <b>Materials</b>         | Body: Al (anodized), silencer: plastic  |



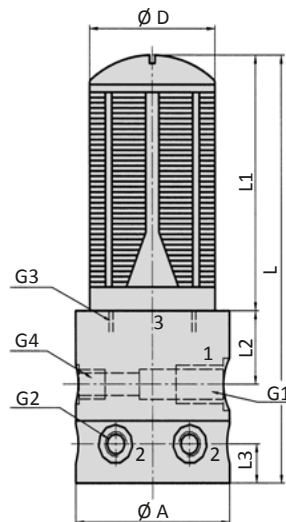
The MI series is based on the Venturi principle. The unit is available with 4, 6 or 8 vacuum ports. The vacuum is maintained on all ports, even in cases where one or several cups draw atmospheric pressure. The granular silencer is part of delivery. The MIF series is developed for high flow rates.


**Technical data**

| Model-no.:                      | MIF-4/25   | MIF-4/60   | MIF-4/80   | MIF-6/40   | MIF-6/55   | MIF-8/30   | MIF-8/40   |
|---------------------------------|------------|------------|------------|------------|------------|------------|------------|
| <b>Max. vacuum level (%)</b>    | 70         | 73         | 70         | 73         | 67         | 70         | 70         |
| <b>Number of vacuum ports</b>   | 4          | 4          | 4          | 6          | 6          | 8          | 8          |
| <b>Flow rate (l/min)**</b>      | 8          | 16         | 25         | 9          | 17         | 11         | 16         |
| <b>Air consumption (l/min)*</b> | 112 (4x28) | 240 (4x60) | 376 (4x94) | 240 (6x40) | 366 (6x61) | 240 (8x30) | 400 (8x50) |
| <b>Time to evacuate (s/l)**</b> | 1.1        | 0.6        | 0.4        | 0.8        | 0.6        | 0.8        | 0.6        |
| <b>Operating pressure (bar)</b> | 4.5 ... 6  | 4.5 ... 6  | 4.5 ... 6  | 4.5 ... 6  | 4.5 ... 6  | 4.5 ... 6  | 4.5 ... 6  |
| <b>Weight (kg)</b>              | 0.240      | 0.370      | 0.370      | 0.370      | 0.370      | 0.370      | 0.370      |

\* at 5 bar operating pressure

\*\* at 40% vacuum level and 5 bar operating pressure

**Dimensions**


- 1 = pressure inlet
- 2 = vacuum inlet
- 3 = exhaust

| Model-no.:      | Ø A | Ø D  | G1   | G2   | G3   | G4   | L   | L1 | L2 | L3 |
|-----------------|-----|------|------|------|------|------|-----|----|----|----|
| <b>MIF-4/25</b> | 48  | 24.5 | G1/4 | G1/8 | G1/2 | G1/8 | 109 | 47 | 25 | 15 |
| <b>MIF-4/60</b> | 59  | 48   | G1/4 | G1/8 | G1   | G1/8 | 163 | 97 | 28 | 15 |
| <b>MIF-4/80</b> | 59  | 48   | G1/4 | G1/8 | G1   | G1/8 | 163 | 97 | 28 | 15 |
| <b>MIF-6/40</b> | 59  | 48   | G1/4 | G1/8 | G1   | G1/8 | 163 | 97 | 28 | 15 |
| <b>MIF-6/55</b> | 59  | 48   | G1/4 | G1/8 | G1   | G1/8 | 163 | 97 | 28 | 15 |
| <b>MIF-8/30</b> | 59  | 48   | G1/4 | G1/8 | G1   | G1/8 | 163 | 97 | 28 | 15 |
| <b>MIF-8/40</b> | 59  | 48   | G1/4 | G1/8 | G1   | G1/8 | 163 | 97 | 28 | 15 |