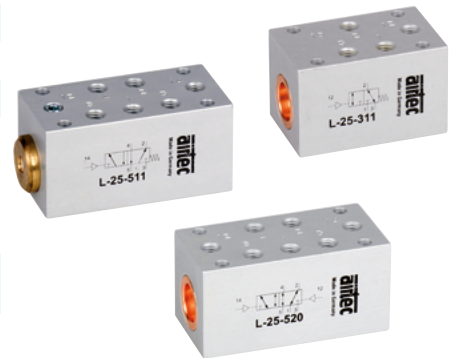
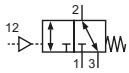


**Technical details**

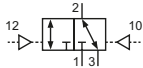
<b>Connection</b>	M5
<b>Nominal size</b>	3.2 mm
<b>Temperature range</b>	-10°C ... +70°C
<b>Medium</b>	Filtered, oil-free and dried compressed air according to ISO 8573-1:2010, Class 7:2:4, instrument air, free of aggressive additives. Alternatively the pressure dew point must be at least 10°C below lowest occurring ambient temperature.
<b>Materials</b>	Body: Al (anodized), seals: NBR and POM, inner parts: Al, brass, stainless steel
	Valves in accordance with 2014/34/EU (ATEX) available. (Chapter 13)



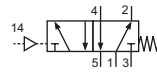
Pneumatically operated spool valve. The valve switches upon pressurization of the pilot port.

**3/2-way valves**


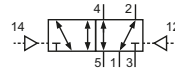
L-25-311  
3/2-way, single pilot, mechanical spring return



L-25-320  
3/2-way, double pilot

**5/2-way valves**


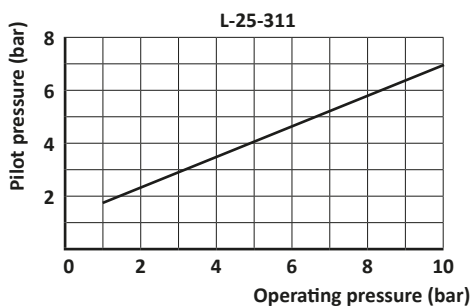
L-25-511  
5/2-way, single pilot, mechanical spring return



L-25-520  
5/2-way, double pilot

**Technical data**

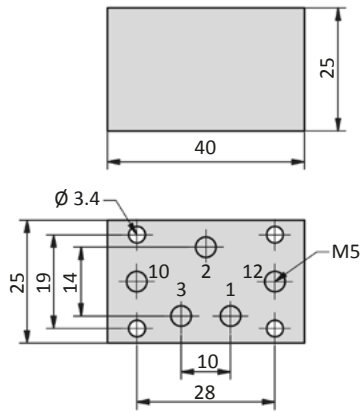
Model-no.:	L-25-311	L-25-320	L-25-511	L-25-520
<b>Operating pressure (bar)</b>	1 ... 10	0 ... 10	0 ... 10	0 ... 10
<b>Pilot pressure (bar)</b>	see diagram	2 ... 10	3 ... 10	2 ... 10
<b>Flow rate (NI/min)</b>	160	160	160	160
<b>Weight (kg)</b>	0.065	0.068	0.084	0.085



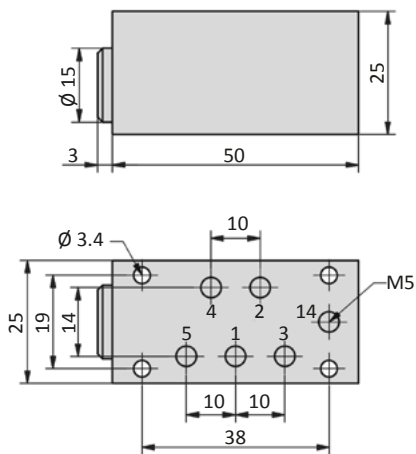
## Series L-25

### Dimensions

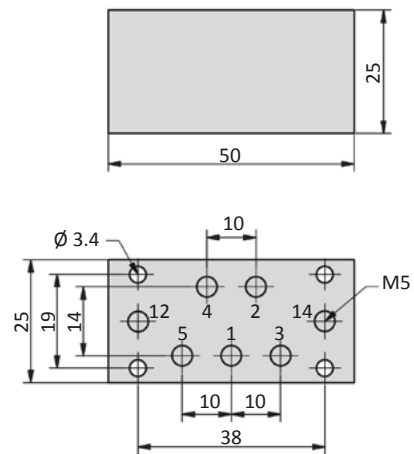
#### L-25-3xx



#### L-25-511



#### L-25-520



- 1 = pressure inlet
- 2,4 = outlets
- 3,5 = exhausts
- 10,12,14 = pilot ports