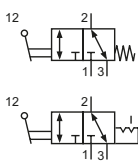


Technical details

Temperature range	-10°C ... +70°C
Medium	Filtered, oil-free and dried compressed air according to ISO 8573-1:2010, Class 7:2:4, instrument air, free of aggressive additives. Alternatively the pressure dew point must be at least 10°C below lowest occurring ambient temperature.
Materials	Body: Al (anodized), seals: NBR and POM, inner parts: Al, stainless steel and brass
	Valves in accordance with 2014/34/EU (ATEX) available. (Chapter 13)

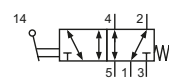


Hand lever operated spool valve.

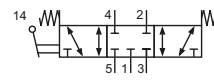
3/2-way-Valves


HF-xx-310
3/2-way, hand lever, mechanical spring return

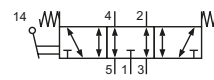
HR-xx-320
3/2-way, two positions, hand lever, detent

5/2- and 5/3-way-Valves


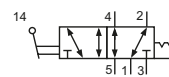
HF-xx-510
5/2-way, hand lever, mechanical spring return



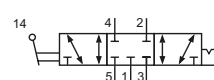
HF-xx-530
5/3-way, center position closed, hand lever, spring return



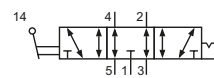
HF-xx-533
5/3-way, center position exhausted, hand lever, spring return



HR-xx-520
5/2-way, two positions, hand lever, detent



HR-xx-530
5/3-way, center position closed, hand lever, detent



HR-xx-533
5/3-way, center position exhausted, hand lever, detent

Please complete: xx = 18 for G1/8
xx = 14 for G1/4
xx = 12 for G1/2

Technical data

Model-no.:	HF-18-310	HF-14-310	HF-12-310	HF-18-510	HF-14-510	HF-12-510
Connection	G1/8	G1/4	G1/2	G1/8	G1/4	G1/2
Nominal size (mm)	6	9	14	6	9	14
Flow rate (NI/min)	750	1580	3300	750	1580	3300
Operating pressure	0 ... 12 bar	0 ... 12 bar	0 ... 12 bar	0 ... 12 bar	0 ... 12 bar	0 ... 12 bar
Actuating force at 6 bar (N)	13	20	32	13	20	32
Weight (kg)	0.266	0.48	1.21	0.31	0.56	1.43

Model-no.:	HF-18-530	HF-14-530	HF-12-530	HF-18-533	HF-14-533	HF-12-533
Connection	G1/8	G1/4	G1/2	G1/8	G1/4	G1/2
Nominal size (mm)	6	9	14	6	9	14
Flow rate (NI/min)	780	1800	3300	780	1800	3300
Operating pressure	0 ... 10 bar	0 ... 12 bar	0 ... 12 bar	0 ... 10 bar	0 ... 12 bar	0 ... 12 bar
Actuating force at 6 bar (N)	20	25	36	20	25	36
Weight (kg)	0.32	0.58	1.43	0.32	0.58	1.43

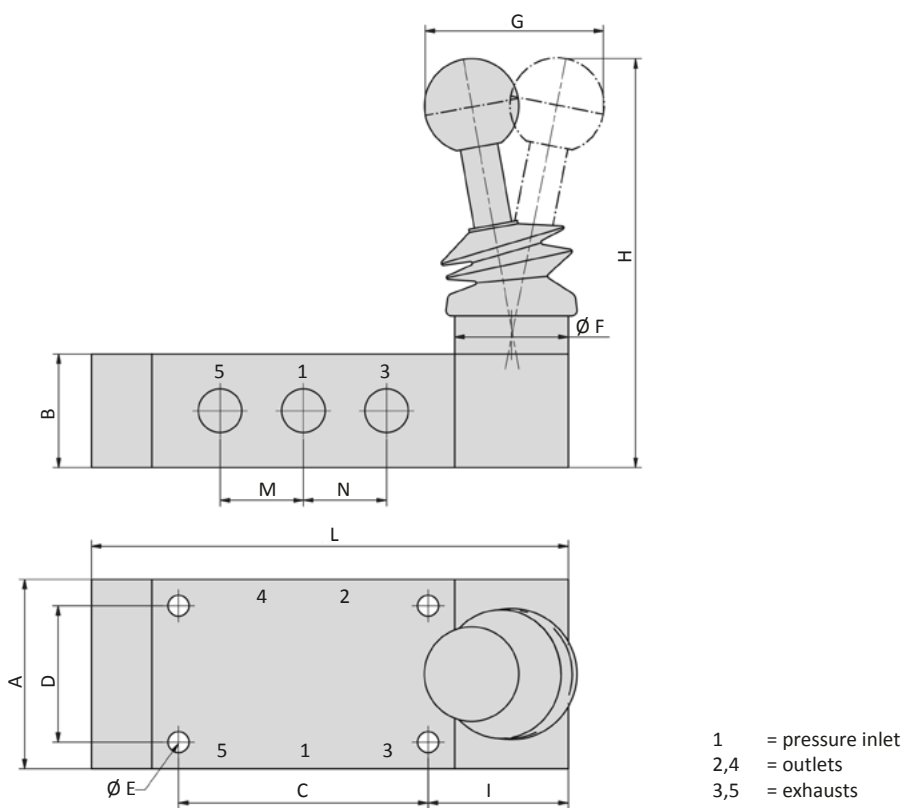
Model-no.:	HR-18-320	HR-14-320	HR-12-320	HR-18-520	HR-14-520	HR-12-520
Connection	G1/8	G1/4	G1/2	G1/8	G1/4	G1/2
Nominal size (mm)	6	9	14	6	9	14
Flow rate (NI/min)	750	1580	3300	750	1580	3300
Operating pressure	0 ... 12 bar	0 ... 12 bar	0 ... 12 bar	0 ... 12 bar	0 ... 12 bar	0 ... 12 bar
Actuating force at 6 bar (N)	16	24	36	16	24	36
Weight (kg)	0.268	0.485	1.215	0.312	0.564	1.43

Series HF, HR

Technical data

Model-no.:	HR-18-530	HR-14-530	HR-12-530	HR-18-533	HR-14-533	HR-12-533
Connection	G1/8	G1/4	G1/2	G1/8	G1/4	G1/2
Nominal size (mm)	6	9	14	6	9	14
Flow rate (NI/min)	780	1800	3300	780	1800	3300
Operating pressure	0 ... 10 bar	0 ... 12 bar	0 ... 12 bar	0 ... 10 bar	0 ... 12 bar	0 ... 12 bar
Actuating force at 6 bar (N)	20	25	40	20	25	40
Weight (kg)	0.32	0.58	1.43	0.32	0.58	1.43

Dimensions



Model-no.:		A	B	C	D	Ø E	Ø F	G	H	I	L	M	N
HF-18-310	HR-18-320	40	25	34	30	4.5	25	36	88	31	87	-	18
HF-14-310	HR-14-320	50	30	44	36	5.5	30	46	112	37	104	-	22
HF-12-310	HR-12-320	70	40	70	50	6.5	40	64	148	51	148	-	36
HF-18-510	HR-18-520	40	25	52	30	4.5	25	36	88	31	105	18	18
HF-14-510	HR-14-520	50	30	66	36	5.5	30	46	112	37	126	22	22
HF-12-510	HR-12-520	70	40	106	50	6.5	40	64	148	51	184	36	38
HF-18-53x	HR-18-53x	40	25	52	30	4.5	25	45	88	31	105	18	18
HF-14-53x	HR-14-53x	50	30	66	36	5.5	30	53	112	37	126	22	22
HF-12-53x	HR-12-53x	70	40	106	50	6.5	40	64	148	51	193	36	36