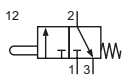


Technical details

Connection	M5
Nominal size	2 mm
Temperature range	-10°C ... +70°C
Medium	Filtered, oil-free and dried compressed air according to ISO 8573-1:2010, Class 7:2:4, instrument air, free of aggressive additives. Alternatively the pressure dew point must be at least 10°C below lowest occurring ambient temperature.
Materials	Body: Al (anodized), seals: FKM, NBR, inner parts: stainless steel, brass, stem: stainless steel



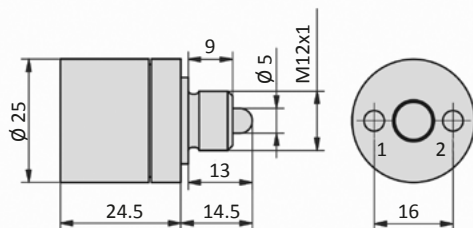
Mechanically operated seat valve.

3/2-way-Valves


E-30-311-M12
 3/2-way, mechanical spring return,
 stem operated

Technical data

Model-no.:	E-30-311-M12
Operating pressure (bar)	0 ... 12 bar
Flow rate (NI/min)	110
Actuating force at 6 bar (N)	21
Pre-stroke (mm)	1
Actuation stroke (mm)	1
Pre actuation stroke (mm)	2
Weight (kg)	0.037

Dimensions
E-30-310


- 1 = pressure inlet
- 2 = outlets