

Pressure boosters 90-PB

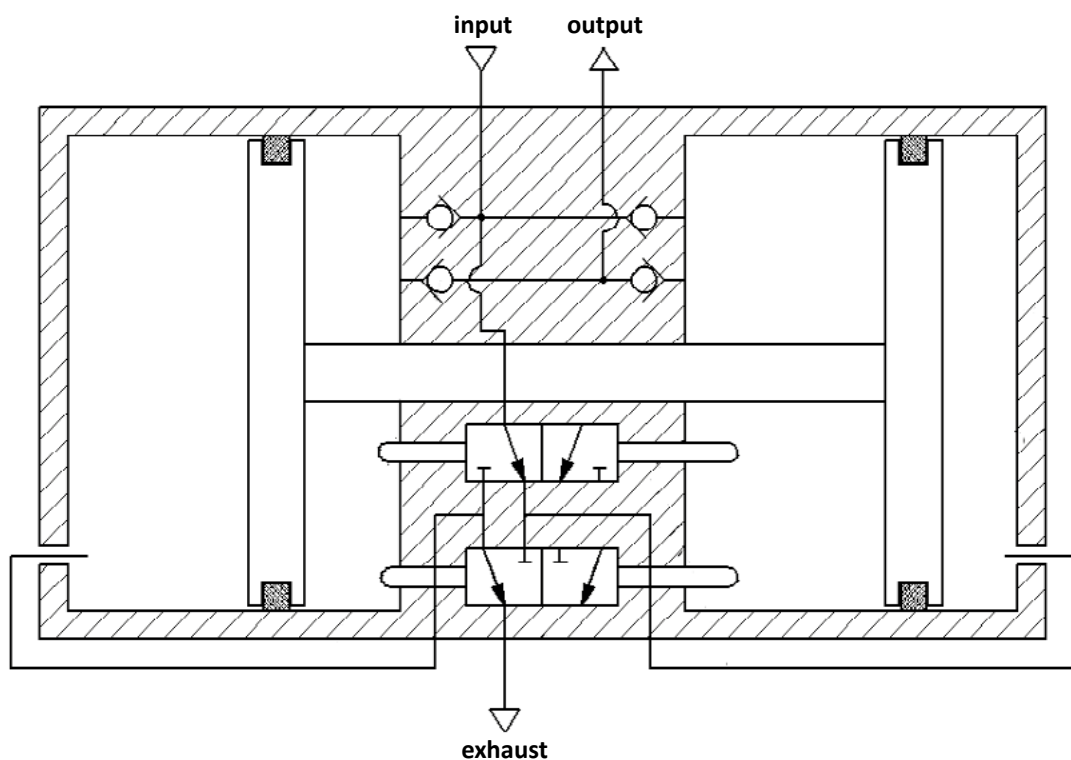
Technical details

Temperature range	-40°C ... +80°C
Input range	1.5...10 bar
Mounting	arbitrary
Medium	compressed air according to ISO 8573-1:2010
Materials	Body: Al (anodized), seals: NBR, inner parts: steel (zinc plated), stainless steel and brass



Twin-piston pressure intensifier suitable only for compressed air.
The output pressure can increase to up to 1.8-fold the value of the supply input pressure.

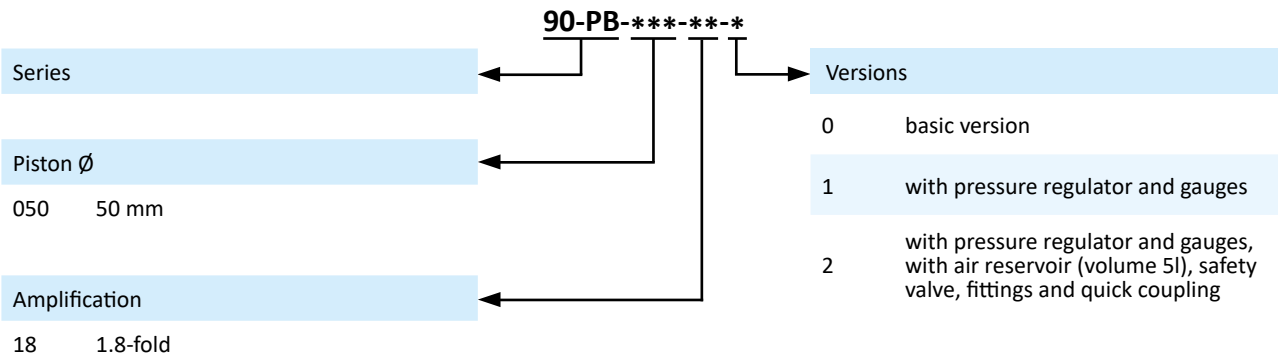
Function



The Pressure booster 90-PB is suitable only for compressed air.
When the DPA is pressurised with compressed air, integrated non-return valves automatically facilitate pressure build up on the secondary side. The pressure booster starts automatically when the supply pressure is applied and the desired output pressure has not yet been reached.
Pressure boosters are not suitable as a replacement for compressors, as wear on seals and drive pistons increases significantly during continuous operation without breaks.

Pressure boosters 90-PB

Order code



Technical Data

Model-No.:	90-PB-050-18
Piston-Ø (mm)	50
Amplification factor	1.8
Connection	G1/4

90-PB-050-18-1



Pressure boosters 90-PB

Dimensions 90-PB-050-18-0

