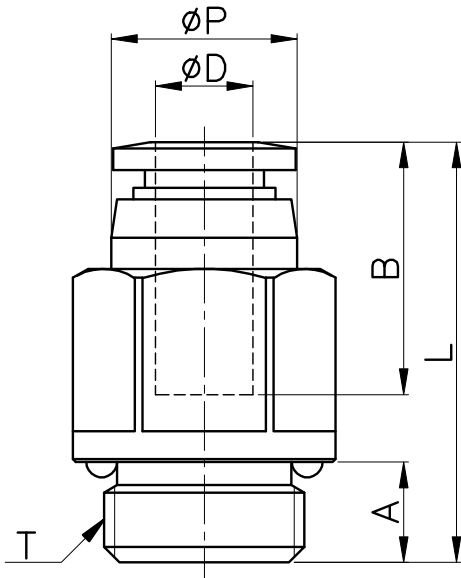
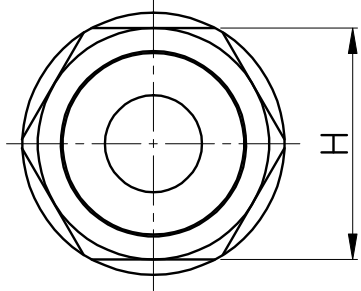


SPC-G



MODEL	øD	øP	T	L	A	B	H (Hex)	WEIGHT (g)	BOX(EA)
SPC 04-G01	4	10.3	G 1/8	25.5	5.0	15.3	12	10.0	100
SPC 06-G01	6	12.0	G 1/8	27.7	5.0	16.9	12	13.0	100
SPC 06-G02			G 1/4	27.2	6.5		15	20.0	50
SPC 08-G02	8	14.0	G 1/4	31.9	6.5	18.6	15	20.0	50
SPC 08-G03			G 3/8	31.9	6.5		17	36.0	50
SPC 10-G02	10	17.0	G 1/4	34.9	6.5	20.3	17	48.0	50
SPC 10-G03			G 3/8	36.4	6.5		17	36.0	50
SPC 10-G04			G 1/2	37.4	8.0		21	60.0	50
SPC 12-G02	12	19.0	G 1/4	43.2	6.5	22.6	19	48.0	50
SPC 12-G03			G 3/8	43.2	6.5		21	49.0	25
SPC 12-G04			G 1/2	43.7	8.0		21	64.0	25