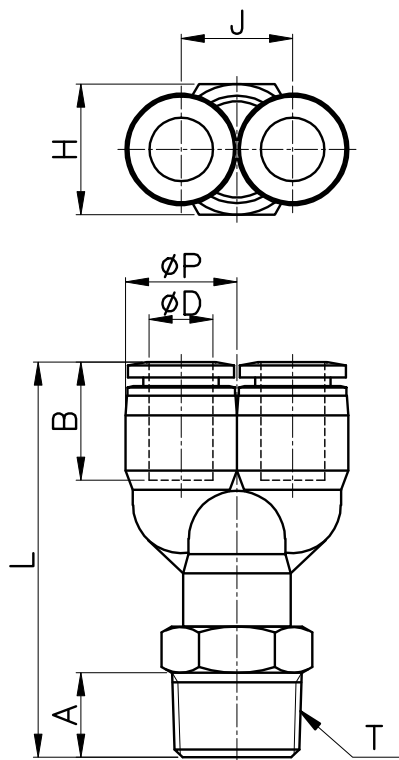


PWT



MODEL	ØD	ØP	T	L	J	A	B	H (Hex)	ORIFICE	WEIGHT (g)	BOX(EA)
PWT 04-M5	4	10.5	M5*0.8p	39.4	10.5	4.0	15.5	10	2.5	11.0	100
PWT 04-M6			M6*1.0p	39.5		4.1		10	3.0	11.0	100
PWT 04-01			R 1/8	43.4		8.0		10		12.0	100
PWT 04-02			R 1/4	45.4		10.0		14		18.0	100
PWT 04-03			R 3/8	46.4		11.0		17		27.0	50
PWT 06-M5	6	12.5	M5*0.8p	40.4	12.5	4.0	16.9	12	2.5	16.0	50
PWT 06-M6			M6*1.0p	40.5		4.1		12	3.0	16.0	50
PWT 06-01			R 1/8	44.4		8.0		12	4.0	17.0	50
PWT 06-02			R 1/4	47.4		10.0		14		22.0	50
PWT 06-03			R 3/8	48.4		11.0		17		32.0	50
PWT 06-04	R 1/2	51.4	14.0	21	54.0	25					
PWT 08-01	8	14.5	R 1/8	47.4	14.5	8.0	18.6	14	6.0	22.0	50
PWT 08-02			R 1/4	50.4		10.0		14		24.0	50
PWT 08-03			R 3/8	51.4		11.0		17		38.0	50
PWT 08-04			R 1/2	54.4		14.0		21		50.0	25
PWT 10-01	10	17.6	R 1/8	51.3	17.6	8.0	20.3	17	6.0	35.0	25
PWT 10-02			R 1/4	54.3		10.0		17	8.0	37.0	25
PWT 10-03			R 3/8	55.3		11.0		17		40.0	25
PWT 10-04			R 1/2	58.3		14.0		21		63.0	25
PWT 12-01	12	21.0	R 1/8	57.2	21.0	8.0	22.7	19	6.0	54.0	25
PWT 12-02			R 1/4	59.2		10.0		19	9.0	52.0	25
PWT 12-03			R 3/8	60.2		11.0		19	10.0	53.0	25
PWT 12-04			R 1/2	63.2		14.0		21		66.0	25