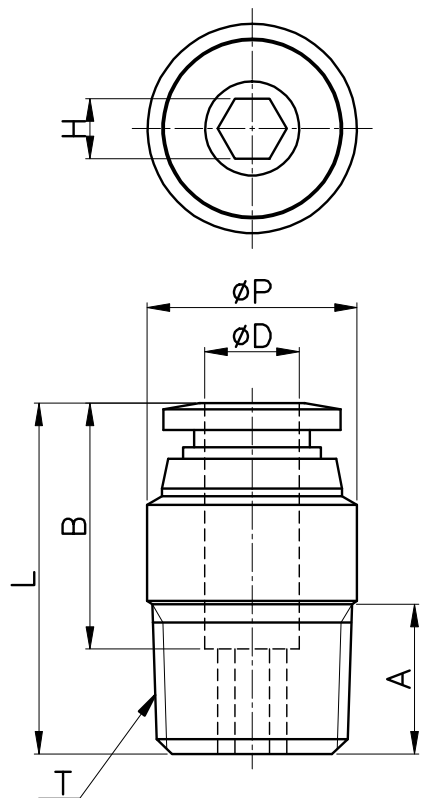


# POC



MODEL	ØD	ØP	T	L	A	B	H (Hex)	ORIFICE	WEIGHT (g)	BOX(EA)
POC 04-M5	4	10.0	M5*0.8p	20.9	4.0	14.8	2	2.0	6.0	100
POC 04-M6		10.0	M6*1.0p	21.3	4.6		3	3.0	6.0	100
POC 04-01		10.0	R 1/8	20.8	8.0		3		8.0	100
POC 04-02		14.0	R 1/4	20.8	10.0		3		15.0	100
POC 04-03		17.0	R 3/8	20.8	11.0		3		24.0	100
POC 06-M5	6	12.0	M5*0.8p	23.1	4.0	16.4	2	2.0	8.0	100
POC 06-M6		12.0	M6*1.0p	23.5	4.6		3	3.0	8.0	100
POC 06-01		12.0	R 1/8	22.7	8.0		4	4.0	9.0	100
POC 06-02		14.0	R 1/4	23.4	10.0		4		15.0	100
POC 06-03		17.0	R 3/8	23.4	11.0		4		25.0	100
POC 08-01	8	14.0	R 1/8	27.9	8.0	18.4	5	5.0	14.0	100
POC 08-02		14.0	R 1/4	25.9	10.0		6	6.0	14.0	100
POC 08-03		17.0	R 3/8	25.9	11.0		6		25.0	100
POC 08-04		21.0	R 1/2	27.3	14.0		6		46.0	50
POC 10-01	10	17.0	R 1/8	29.9	8.0	19.7	5	5.0	19.0	100
POC 10-02		17.0	R 1/4	27.8	10.0		6	6.0	17.0	100
POC 10-03		17.0	R 3/8	27.8	11.0		8	8.0	22.0	100
POC 10-04		21.0	R 1/2	27.8	14.0		8		40.0	50
POC 12-01	12	19.0	R 1/8	32.2	8.0	21.9	5	5.0	24.0	50
POC 12-02		19.0	R 1/4	33.8	10.0		6	6.0	26.0	50
POC 12-03		19.0	R 3/8	31.7	11.0		8	8.0	26.0	50
POC 12-04		21.0	R 1/2	30.2	14.0		8		40.0	50