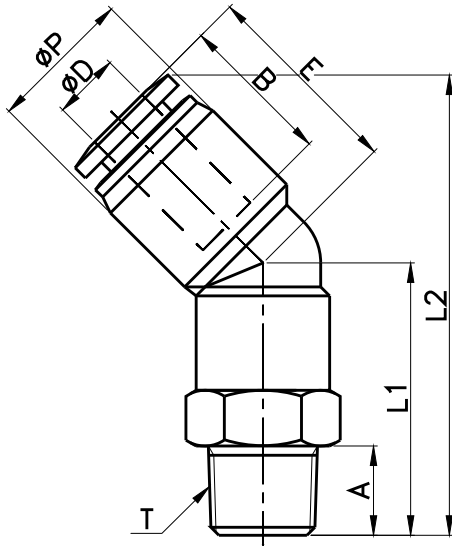
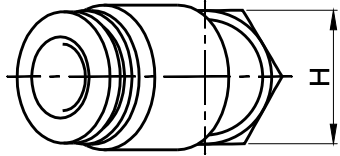


# PL45



MODEL	øD	øP	T	L1	L2	E	A	B	H (Hex)	ORIFICE	WEIGHT (g)	BOX (EA)
PL45 04-M5	4	10.5	M5*0.8p	19.5	34.4	16.3	4.0	14.8	10	3.0	5.9	100
PL45 04-M6			M6*1.0p	19.6	34.5		4.1		10		7.9	100
PL45 04-01			R 1/8	23.5	38.4		8.0		10		9.9	100
PL45 04-02			R 1/4	25.5	40.4		10.0		14		14.9	100
PL45 04-03			R 3/8	26.5	41.4		11.0		17		25.9	50
PL45 06-M5	6	13.0	M5*0.8p	20.5	37.3	18.4	4.0	16.4	12	4.0	7.0	100
PL45 06-M6			M6*1.0p	20.6	37.4		4.1		12		12.0	100
PL45 06-01			R 1/8	24.5	41.3		8.0		12		13.0	100
PL45 06-02			R 1/4	27.5	44.3		10.0		14		19.0	100
PL45 06-03			R 3/8	28.5	45.3		11.0		17		27.0	50
PL45 06-04			R 1/2	31.5	48.3		14.0		21		39.0	50
PL45 08-01	8	14.8	R 1/8	26.5	46.5	21.8	8.0	18.3	14	6.0	17.8	50
PL45 08-02			R 1/4	29.5	49.5		10.0		14		21.8	50
PL45 08-03			R 3/8	30.5	50.5		11.0		17		26.8	50
PL45 08-04			R 1/2	33.5	53.5		14.0		21		42.8	50
PL45 10-01	10	17.5	R 1/8	25.9	48.2	23.3	8.0	20.2	17	8.0	25.6	50
PL45 10-02			R 1/4	28.9	51.2		10.0		17		27.6	50
PL45 10-03			R 3/8	29.9	52.2		11.0		17		29.6	50
PL45 10-04			R 1/2	32.9	55.2		14.0		21		47.6	25
PL45 12-01	12	21.0	R 1/8	29.7	55.3	26.5	8.0	22.9	19	6.0	42.3	25
PL45 12-02			R 1/4	31.7	57.3		10.0		19		40.3	25
PL45 12-03			R 3/8	32.7	58.3		11.0		19	43.3	25	
PL45 12-04			R 1/2	35.7	61.3		14.0		21	52.3	25	