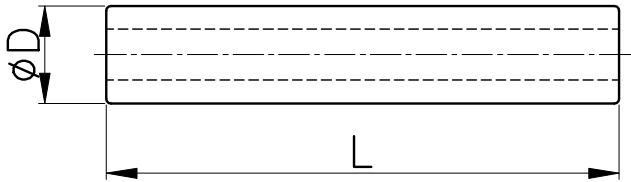


# PIJ



MODEL	$\varnothing D$	L	ORIFICE	WEIGHT (g)	BOX(EA)
PIJ 04	4	36.0	2.5	1.0	100
PIJ 06	6	38.0	3.5	1.0	100
PIJ 08	8	40.0	5.0	1.0	100
PIJ 10	10	45.0	7.0	3.0	100
PIJ 12	12	48.0	8.5	4.0	50
PIJ 14	14	52.0	10.0	5.0	50
PIJ 16	16	53.0	12.0	6.0	50