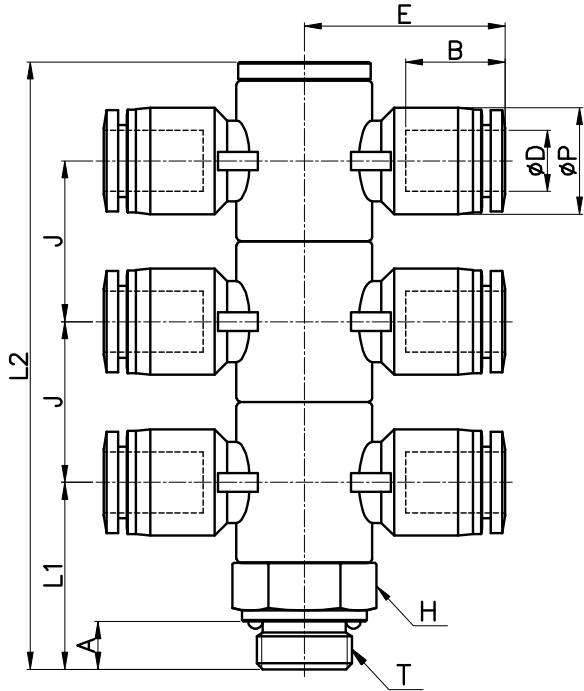
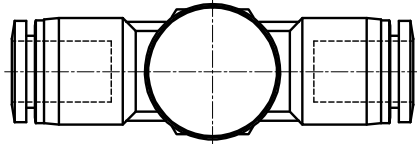


PHT-G(3)



MODEL	ϕD	ϕP	T	L1	L2	E	A	B	J	H (Hex)	ORIFICE	WEIGHT (g)	BOX(EA)
PHT 04-G01(3)	4	10.5	G 1/8	20.5	67.7	23.3	5.0	14.8	17.9	14	3.2	56.0	20
PHT 04-G02(3)			G 1/4	25.5	82.7	25.1	6.5		21.9	17		85.0	20
PHT 04-G03(3)			G 3/8	26.0	83.7	27.0	6.5		21.9	21		125.0	12
PHT 04-G04(3)			G 1/2	29.6	92.8	29.0	8.0		23.9	24		180.0	9
PHT 06-G01(3)	6	12.5	G 1/8	20.5	67.7	24.1	5.0	16.4	17.9	14	4.0	62.0	15
PHT 06-G02(3)			G 1/4	25.5	82.7	26.0	6.5		21.9	17	90.0	15	
PHT 06-G03(3)			G 3/8	26.0	83.7	27.9	6.5		21.9	21	129.0	12	
PHT 06-G04(3)			G 1/2	29.6	92.8	29.3	8.0		23.9	24	184.0	9	
PHT 08-G01(3)	8	14.5	G 1/8	20.5	67.7	25.6	5.0	18.3	17.9	14	5.0	62.0	15
PHT 08-G02(3)			G 1/4	25.5	82.7	27.4	6.5		21.9	17	96.0	12	
PHT 08-G03(3)			G 3/8	26.0	83.7	29.3	6.5		21.9	21	133.0	12	
PHT 08-G04(3)			G 1/2	29.6	92.8	30.7	8.0		23.9	24	192.0	8	
PHT 10-G01(3)	10	17.5	G 1/8	20.5	67.7	28.1	5.0	20.2	17.9	14	5.0	82.0	10
PHT 10-G02(3)			G 1/4	25.5	82.7	29.8	6.5		21.9	17	110.0	10	
PHT 10-G03(3)			G 3/8	26.0	83.7	31.9	6.5		21.9	21	149.0	8	
PHT 10-G04(3)			G 1/2	29.6	92.8	33.7	8.0		23.9	24	201.0	8	
PHT 12-G02(3)	12	20.5	G 1/4	25.5	82.7	33.0	6.5	22.9	21.9	17	8.0	131.0	8
PHT 12-G03(3)			G 3/8	26.0	83.7	35.1	6.5		21.9	21	168.0	8	
PHT 12-G04(3)			G 1/2	29.6	92.8	37.4	8.0		23.9	24	219.0	8	