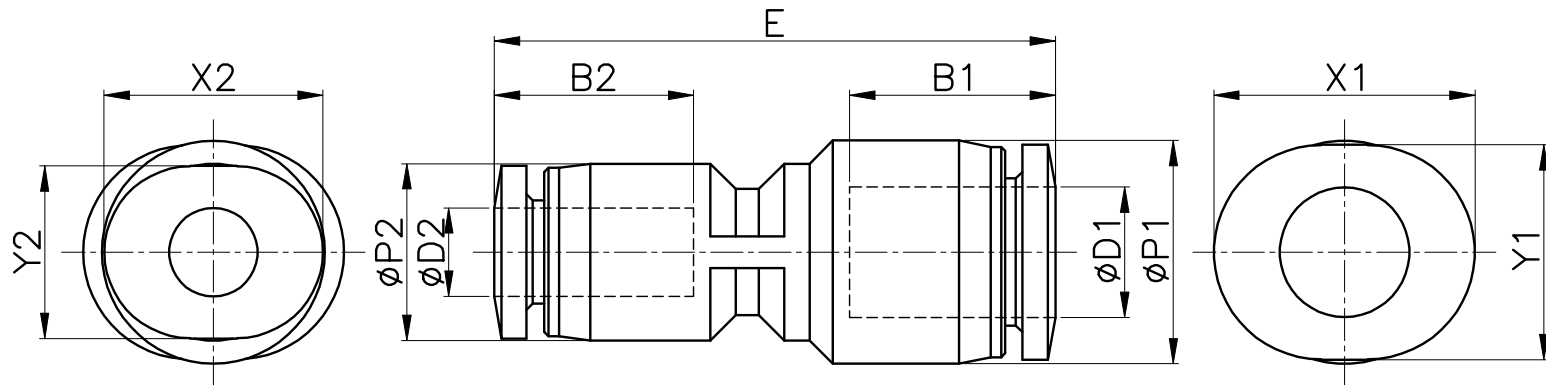


PG-C



MODEL	phi D1	phi D2	phi P1	phi P2	E	B1	B2	X1	Y1	X2	Y2	ORIFICE	WEIGHT (g)	BOX(EA)
PG 04-03C	4	3	8.4	7.5	24.1	11.8	11.3	10.4	8.2	9.2	7.2	2.4	3.0	100
PG 06-03C	6	3	10.6	7.5	26.1	12.8	11.3	12.4	10.2	9.2	7.2	2.5	3.0	100
PG 06-04C	6	4	10.6	8.4	26.6	12.8	11.8	12.4	10.2	10.4	8.2	3.0	3.0	100