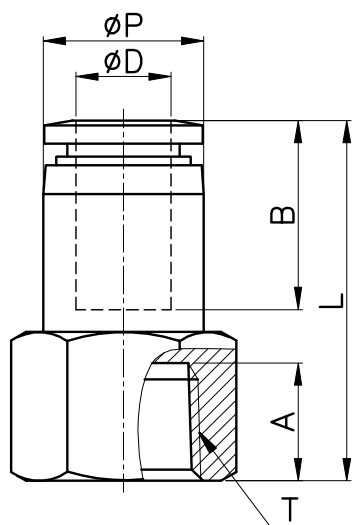
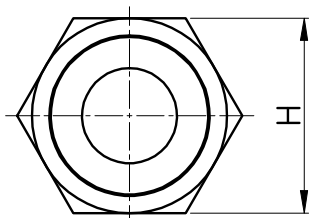


PCF



MODEL	ϕD	ϕP	T	L	A	B	H (Hex)	ORIFICE	WEIGHT (g)	BOX(EA)
PCF 04-M5	4	10.0	M5*0.8p	26.0	7.0	14.8	12	3.5	16.0	100
PCF 04-01			Rc 1/8	27.1	9.0		14		17.0	100
PCF 04-02			Rc 1/4	29.1	11.0		17		22.0	100
PCF 04-03			Rc 3/8	30.1	12.0		22		38.0	50
PCF 06-M5	6	12.0	M5*0.8p	26.7	7.0	16.4	12	4.2	20.0	100
PCF 06-01			Rc 1/8	28.2	9.0		14	5.0	18.0	100
PCF 06-02			Rc 1/4	30.2	11.0		17		24.0	100
PCF 06-03			Rc 3/8	31.2	12.0		22		38.0	50
PCF 06-04			Rc 1/2	33.2	14.0		24		41.0	50
PCF 08-01	8	14.0	Rc 1/8	29.4	9.0	18.4	14	6.0	19.0	100
PCF 08-02			Rc 1/4	31.4	11.0		17		24.0	100
PCF 08-03			Rc 3/8	32.4	12.0		22		39.0	50
PCF 08-04			Rc 1/2	34.4	14.0		24		41.0	50
PCF 10-01	10	16.4	Rc 1/8	32.6	9.0	19.7	17	8.5	31.0	100
PCF 10-02			Rc 1/4	32.6	11.0		17		26.0	100
PCF 10-03			Rc 3/8	33.6	12.0		22		41.0	50
PCF 10-04			Rc 1/2	35.6	14.0		24		43.0	50
PCF 12-02	12	19.0	Rc 1/4	37.1	11.0	21.9	22	10.0	54.0	50
PCF 12-03			Rc 3/8	37.1	12.0		22		46.0	50
PCF 12-04			Rc 1/2	39.1	14.0		24		50.0	25