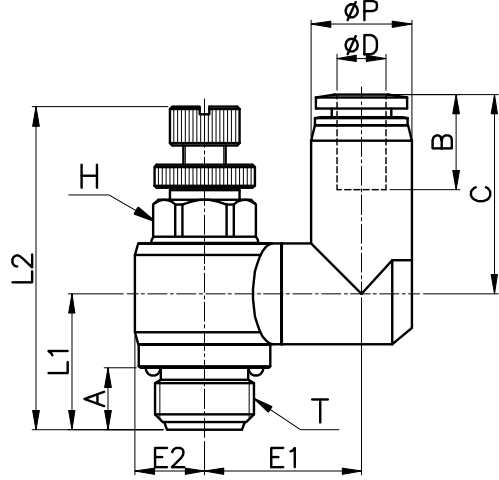
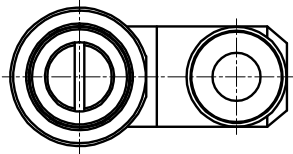


# NSS-G



MODEL	$\phi D$	$\phi P$	T	L1	L2		E1	E2	A	B	H (Hex)	C	WEIGHT (g)	BOX(EA)
					MIN	MAX								
NSS 04-G01	4	10.5	G 1/8	15.3	34.6	39.8	14.3	7.0	6.0	14.8	8	20.3	9.2	50
NSS 04-G02			G 1/4	17.7	39.8	46.1	17.8	9.2	8.0		12	20.2	19.4	50
NSS 06-G01	6	12.5	G 1/8	14.7	34.6	39.8	15.0	7.0	6.0	16.4	8	24.0	21.1	25
NSS 06-G02			G 1/4	17.6	39.8	46.1	20.3	9.2	8.0		12	25.9	38.7	25
NSS 06-G03			G 3/8	21.4	47.7	54.9	23.3	11.5	8.0		14	25.9	70.2	25
NSS 08-G01	8	14.8	G 1/8	14.7	34.6	39.8	16.2	7.0	6.0	18.3	8	24.9	22.1	25
NSS 08-G02			G 1/4	17.6	39.8	46.1	19.3	9.2	8.0		12	28.3	39.8	25
NSS 08-G03			G 3/8	20.8	47.7	54.9	24.6	11.5	8.0		14	29.3	71.4	25
NSS 08-G04			G 1/2	23.0	54.0	60.1	26.6	14.3	9.0		17	29.3	110.0	20
NSS 10-G02	10	17.5	G 1/4	17.6	39.8	46.1	20.3	9.2	8.0	20.2	12	30.7	42.2	20
NSS 10-G03			G 3/8	20.8	47.7	54.9	24.6	11.5	8.0		14	31.7	73.5	20
NSS 10-G04			G 1/2	22.9	54.0	60.1	26.7	14.3	9.0		17	33.1	112.5	12
NSS 12-G02	12	20.5	G 1/4	17.6	39.8	46.1	21.8	9.2	8.0	22.9	12	33.4	44.1	12
NSS 12-G03			G 3/8	20.8	47.7	54.9	24.6	11.5	8.0		14	34.4	79.0	12
NSS 12-G04			G 1/2	22.9	54.0	60.1	26.7	14.3	9.0		17	35.8	115.9	12