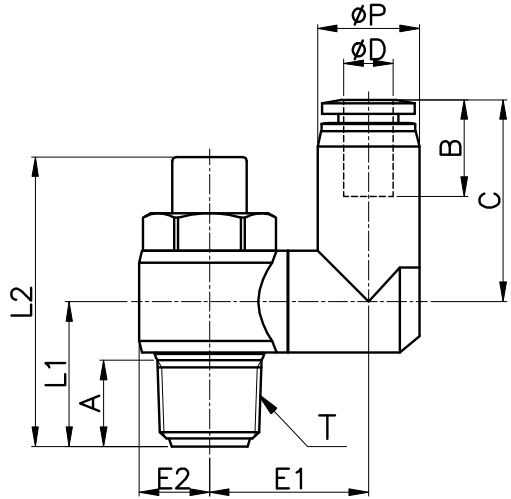
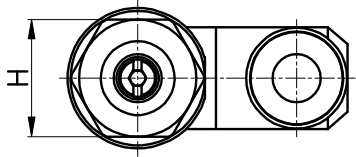


NSS-DC



MODEL	ϕD	ϕP	T	L1	L2	E1	E2	A	B	H (Hex)	C	WEIGHT (g)	BOX(EA)
NSS 04-M5(DC)	4	10.5	M5*0.8p	9.6	23.2	12.3	5.2	3.6	14.8	8	20.3	7.0	50
NSS 04-01(DC)			R 1/8	15.1	31.5	14.3	7.0	8.2		11	20.3	16.0	50
NSS 04-02(DC)			R 1/4	18.4	37.0	17.8	9.2	11.0		15	20.3	35.0	50
NSS 06-M5(DC)	6	12.5	M5*0.8p	9.6	23.2	13.3	5.2	3.6	16.4	8	22.4	9.0	50
NSS 06-01(DC)			R 1/8	15.6	31.5	15.0	7.0	8.2		11	24.0	18.0	25
NSS 06-02(DC)			R 1/4	18.4	37.0	20.3	9.2	11.0		15	25.9	33.0	25
NSS 06-03(DC)			R 3/8	21.9	43.3	23.3	11.5	12.2		19	25.9	63.0	25
NSS 08-01(DC)	8	14.8	R 1/8	15.6	31.5	16.2	7.0	8.2	18.3	11	24.9	20.0	25
NSS 08-02(DC)			R 1/4	18.4	37.0	19.3	9.2	11.0		15	28.3	34.0	25
NSS 08-03(DC)			R 3/8	22.4	43.3	24.6	11.5	12.2		19	29.3	64.0	25
NSS 08-04(DC)			R 1/2	26.6	50.2	26.6	14.3	16.5		24	29.3	100.0	20
NSS 10-02(DC)	10	17.5	R 1/4	18.4	37.0	20.3	9.2	11.0	20.2	15	30.7	38.0	20
NSS 10-03(DC)			R 3/8	22.4	43.3	24.6	11.5	12.2		19	31.7	63.0	20
NSS 10-04(DC)			R 1/2	26.7	50.2	26.7	14.3	16.5		24	33.1	103.0	12
NSS 12-02(DC)	12	20.5	R 1/4	18.4	37.0	21.8	9.2	11.0	22.9	15	33.4	42.0	12
NSS 12-03(DC)			R 3/8	22.4	43.3	24.6	11.5	12.2		19	34.4	65.0	12
NSS 12-04(DC)			R 1/2	26.7	50.2	26.7	14.3	16.5		24	35.8	104.0	12