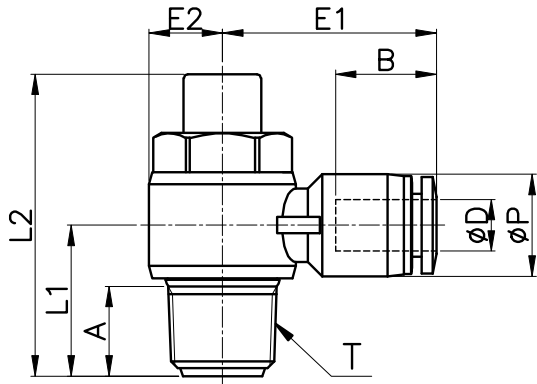
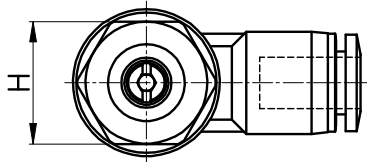


NSC-DC



MODEL	øD	øP	T	L1	L2	E1	E2	A	B	H (Hex)	WEIGHT (g)	BOX(EA)
NSC 03-M5(DC)	3	7.8	M5*0.8p	9.6	23.2	16.5	5.0	3.6	11.3	8	6.0	50
NSC 04-M5(DC)	4	10.5	M5*0.8p	10.3	23.2	20.2	5.0	3.6	14.8	8	7.0	50
NSC 04-01(DC)			R 1/8	15.1	31.5	23.3	7.0	8.2	15.3	11	16.0	50
NSC 04-02(DC)			R 1/4	18.4	37.0	25.3	9.0	11.0		15	35.0	50
NSC 06-M5(DC)	6	12.5	M5*0.8p	11.4	23.2	22.7	5.0	3.6	16.4	8	9.0	50
NSC 06-01(DC)			R 1/8	15.1	31.5	24.2	7.0	8.2		11	18.0	50
NSC 06-02(DC)			R 1/4	18.4	37.0	26.2	9.0	11.0		15	33.0	50
NSC 06-03(DC)			R 3/8	21.9	43.3	27.7	11.0	12.2		19	63.0	25
NSC 06-04(DC)			R 1/2	26.5	50.2	30.8	14.0	16.5		24	108.0	20
NSC 08-01(DC)	8	14.5	R 1/8	16.2	31.5	25.9	7.0	8.2	18.3	11	20.0	50
NSC 08-02(DC)			R 1/4	19.2	37.0	27.9	9.0	11.0		15	34.0	50
NSC 08-03(DC)			R 3/8	21.9	43.3	28.9	11.0	12.2		19	64.0	25
NSC 08-04(DC)			R 1/2	26.5	50.2	31.8	14.0	16.5		24	100.0	20
NSC 10-01(DC)	10	17.5	R 1/8	17.7	31.5	27.9	7.0	8.2	19.7	11	26.0	25
NSC 10-02(DC)			R 1/4	20.7	37.0	29.9	9.0	11.0		15	38.0	25
NSC 10-03(DC)			R 3/8	23.2	43.3	31.0	11.2	12.2		19	63.0	25
NSC 10-04(DC)			R 1/2	26.5	50.2	33.4	14.0	16.5		24	103.0	20
NSC 12-02(DC)	12	20.5	R 1/4	22.2	37.0	33.3	9.0	11.0	22.4	15	42.0	25
NSC 12-03(DC)			R 3/8	24.0	43.3	33.7	11.5	12.2	21.9	19	65.0	25
NSC 12-04(DC)			R 1/2	28.0	50.2	36.1	14.0	16.5		24	104.0	20