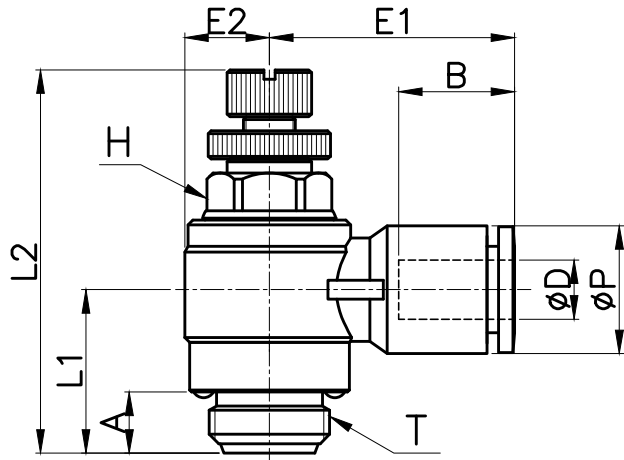
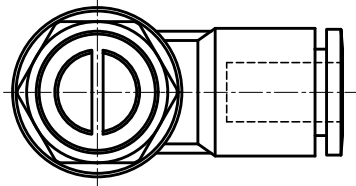


MSC-G



MODEL	ϕD	ϕP	T	L1	L2		E1	E2	A	B	H (Hex)
					MIN	MAX					
MSC 04-G01	4	9.3	G 1/8	15.2	34.6	39.8	20.0	7.1	6.0	12.9	8
MSC 04-G02			G 1/4	18.2	39.8	46.1	21.9	9.0	8.0		12
MSC 06-G01	6	11.5	G 1/8	15.2	34.6	39.8	22.1	7.1	6.0	15.0	8
MSC 06-G02			G 1/4	18.3	39.8	46.1	24.0	9.0	8.0		12
MSC 06-G03			G 3/8	21.2	47.7	54.9	26.1	11.1	8.0		14
MSC 06-G04			G 1/2	23.0	54.5	61.7	28.8	13.8	9.0		17
MSC 08-G01	8	13.6	G 1/8	13.9	34.6	39.8	24.2	7.1	6.0	17.1	8
MSC 08-G02			G 1/4	17.4	39.8	46.1	26.1	9.0	8.0		12
MSC 08-G03			G 3/8	21.2	47.7	54.9	28.2	11.1	8.0		14
MSC 08-G04			G 1/2	23.0	54.5	61.7	30.9	13.8	9.0		17
MSC 10-G01	10	16.4	G 1/8	17.8	34.6	39.8	25.5	7.1	6.0	18.4	8
MSC 10-G02			G 1/4	19.8	39.8	46.1	27.4	9.0	8.0		12
MSC 10-G03			G 3/8	19.9	47.7	54.9	29.5	11.1	8.0		14
MSC 10-G04			G 1/2	23.0	54.5	61.7	32.2	13.8	9.0		17
MSC 12-G02	12	29.5	G 1/4	21.3	34.6	39.8	29.4	9.0	8.0	20.4	12
MSC 12-G03			G 3/8	19.1	47.7	54.9	32.7	11.1	8.0		14
MSC 12-G04			G 1/2	21.4	54.5	61.7	35.2	13.8	9.0	21.4	17