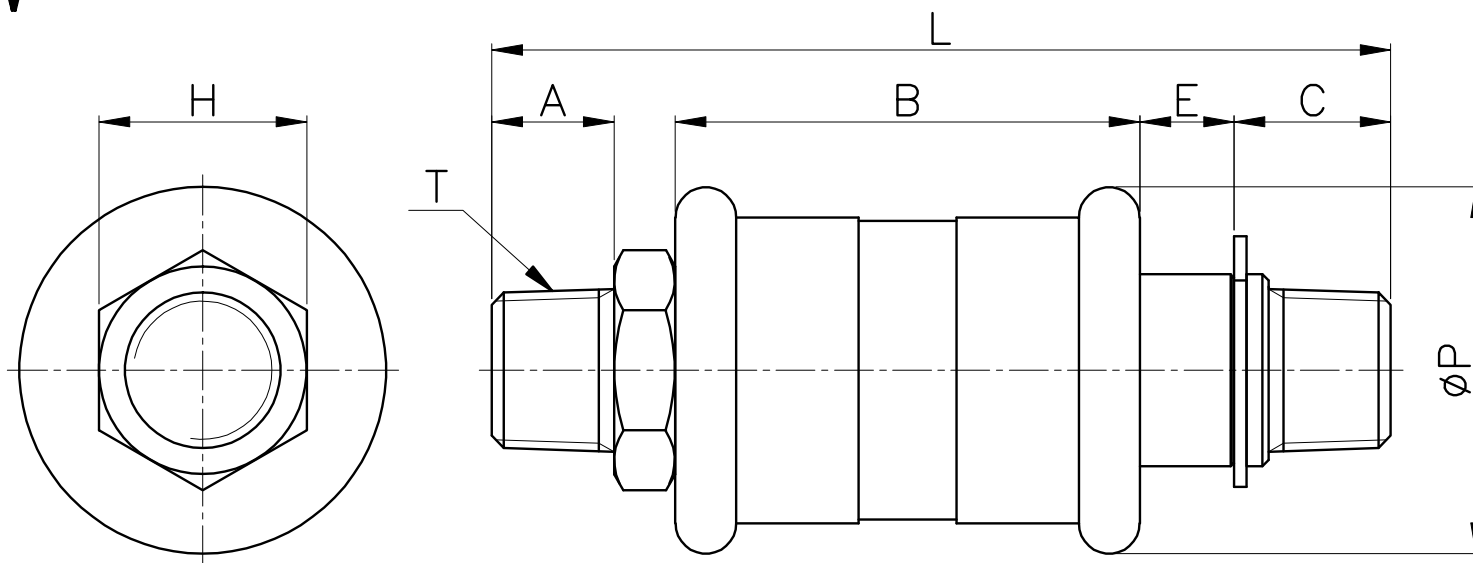


HSV



MODEL	øP	T	L	E	C	A	B	H (Hex)	ORIFICE	WEIGHT (g)	BOX(EA)
HSV M5	19.0	M5*0.8p	45.0	6.0	7.0	4.1	23.0	9	2.6	24.0	50
HSV 01	24.0	R 1/8	54.0	7.2	10.8	8.0	24.0	14	5.0	45.0	25
HSV 02	30.0	R 1/4	73.5	7.7	12.8	10.0	38.0	17	8.0	112.0	12
HSV 03	41.0	R 3/8	83.0	8.0	14.0	11.0	44.0	27	10.0	276.0	6
HSV 04	41.0	R 1/2	89.0	8.0	17.0	14.0	44.0	27	13.0	270.0	6
HSV 06	49.0	R 3/4	104.5	12.5	18.0	15.0	48.0	32	18.8	407.0	4