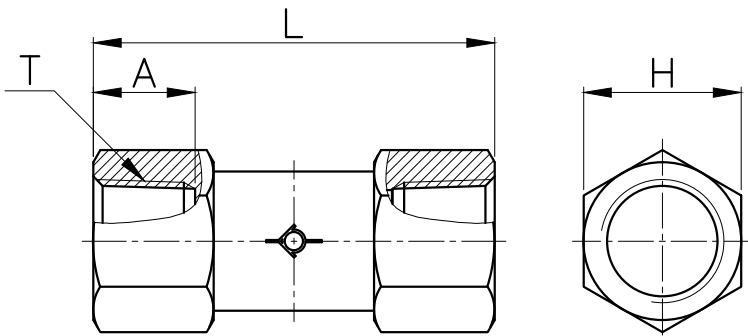


CVFF



MODEL	T	L	A	H (Hex)	WEIGHT (g)	BOX(EA)
CVFF 01-01	Rc 1/8	35.6	9.0	12	20.0	100
CVFF 02-02	Rc 1/4	43.3	11.0	17	49.2	50
CVFF 03-03	Rc 3/8	53.2	12.0	22	93.9	25
CVFF 04-04	Rc 1/2	60.5	14.0	24	113.7	25