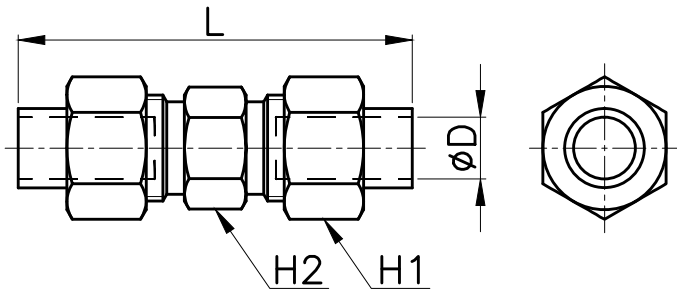


CUC



MODEL	øD	L	H1 (Hex)	H2 (Hex)	ORIFICE	WEIGHT (g)	BOX(EA)
CUC 4x2	4	39.8	10	10	1.0	16.0	100
CUC 4x2.5	4	39.8	10	10	1.3	16.0	100
CUC 6x4	6	42.3	12	10	2.5	20.0	100
CUC 8x5	8	42.7	14	12	3.5	26.0	100
CUC 8x6	8	42.7	14	12	4.5	25.0	50
CUC 10x6.5	10	44.5	17	17	5.0	45.0	50
CUC 10x8	10	44.5	17	17	6.5	43.0	50
CUC 12x8	12	46.6	19	17	6.5	51.0	50
CUC 12x9	12	46.6	19	17	7.5	49.0	50