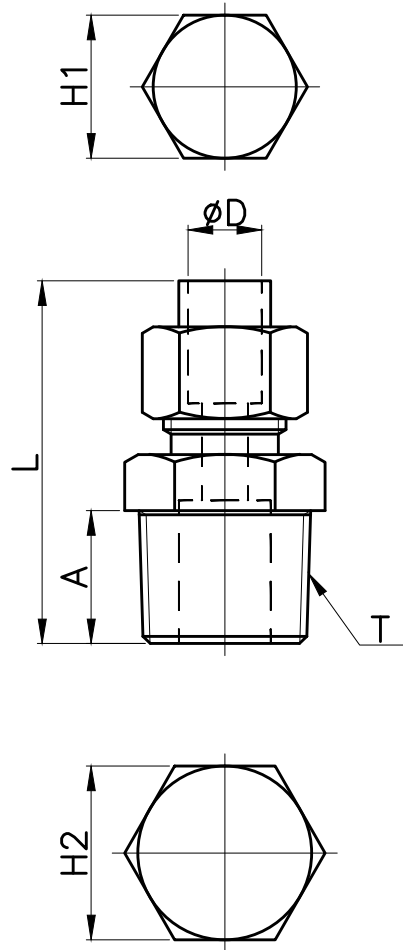


CC



MODEL	øD	T	L	A	H1 (Hex)	H2 (Hex)	ORIFICE	WEIGHT (g)	BOX(EA)
CC 4x2-01	4	R 1/8	29.4	8.0	10	10	1.0	10.0	100
CC 4x2-02		R 1/4	34.4	12.0		14		20.0	100
CC 4x2.5-01		R 1/8	32.4	11.0		10		13.0	100
CC 6x4-01	6	R 1/8	30.2	8.0	12	10	2.5	14.0	100
CC 6x4-02		R 1/4	34.7	12.0		14		22.0	100
CC 6x4-03		R 3/8	35.7	13.0		17		31.0	50
CC 8x5-01	8	R 1/8	30.3	8.0	14	12	3.5	17.0	100
CC 8x5-02		R 1/4	34.8	12.0		14		24.0	100
CC 8x5-03		R 3/8	35.8	13.0		17		34.0	50
CC 8x6-01	8	R 1/8	30.3	8.0	14	12	4.5	17.0	100
CC 8x6-02		R 1/4	34.8	12.0		14		24.0	100
CC 8x6-03		R 3/8	35.8	13.0		17		34.0	50
CC 10x6.5-02	10	R 1/4	35.3	12.0	17	15	5.0	29.0	50
CC 10x6.5-03		R 3/8	36.3	13.0		17		38.0	50
CC 10x6.5-04		R 1/2	41.3	15.0		22		60.0	25
CC 10x8-02	10	R 1/4	35.3	12.0	17	15	6.5	29.0	50
CC 10x8-03		R 3/8	36.3	13.0		17		39.0	50
CC 10x8-04		R 1/2	41.3	15.0		22		59.0	25
CC 12x8-02	12	R 1/4	36.3	12.0	19	17	6.5	35.0	50
CC 12x8-03		R 3/8	40.3	13.0		17		47.0	25
CC 12x8-04		R 1/2	42.3	15.0		22		62.0	25
CC 12x9-02	12	R 1/4	36.3	12.0	19	17	7.5	36.0	50
CC 12x9-03		R 3/8	40.3	13.0		17		46.0	25
CC 12x9-04		R 1/2	42.3	15.0		22		62.0	25
CC 16x12-03	16	R 3/8	47.7	13.0	27	22	10.0	85.0	12
CC 16x12-04		R 1/2	49.7	15.0		22		99.0	12
CC 16x13-03	16	R 3/8	47.7	13.0	27	22	10.0	89.0	12
CC 16x13-04		R 1/2	49.7	15.0		22		94.0	12