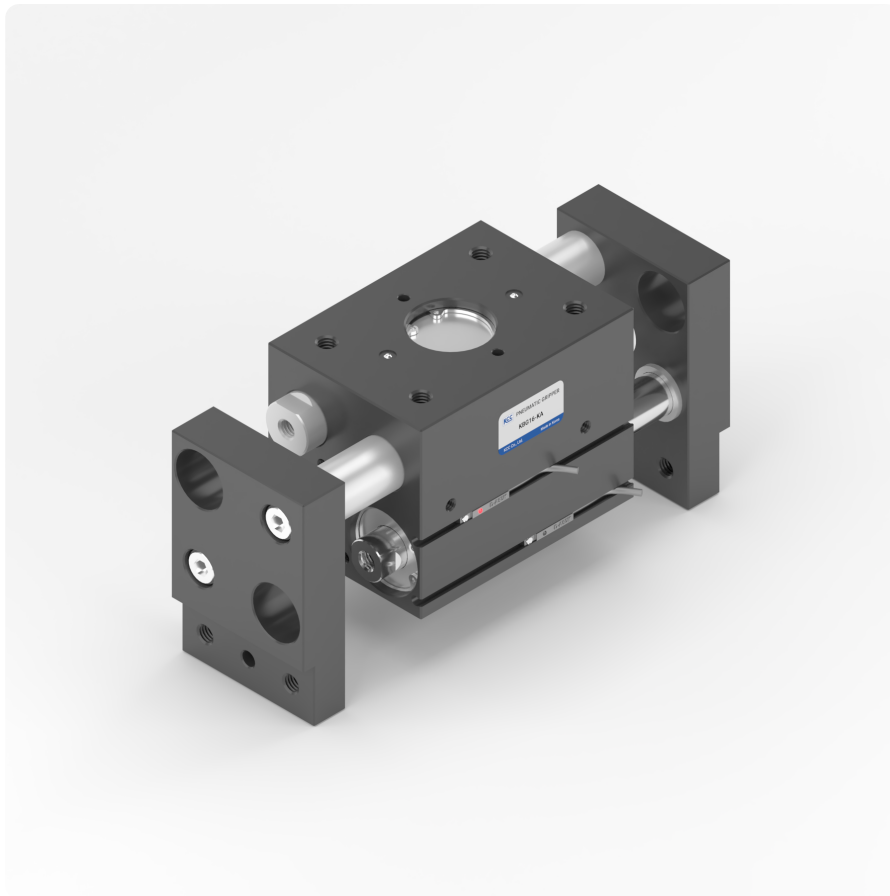


# KBG

Block gripper



Dual piston type with rack & pinion principle

Increased efficiency design with piston at the bottom

Sensor is applicable with embedded neodymium magnet on the piston

Improved hardness and lubrication with no magnet on the guide rack

With pin hole for body and jaw positioning

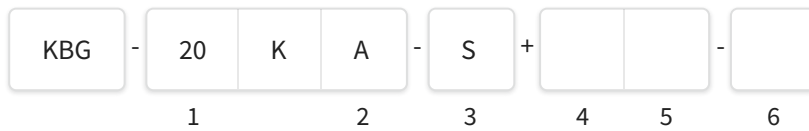
## Specifications

|                              | Unit      | KBG-12  | KBG-16              | KBG-20              | KBG-30              | KBG-40                |
|------------------------------|-----------|---|---------------------|---------------------|---------------------|-----------------------|
| Port                         |           | M5  |                     | Rc(PT) 1/8          |                     |                       |
| Fluid                        |           | Compressed air                                      |                     |                     |                     |                       |
| Operating Pressure           | MPa       | 0.3 ~ 0.7   |                     |                     |                     |                       |
| Ambient Temperature          | °C        | 0 ~ 60  |                     |                     |                     |                       |
| Lubrication                  |           | Not required  |                     |                     |                     |                       |
| Stroke <sup>*1</sup>         | mm        | 2 x 10  | 2 x 15              | 2 x 20              | 2 x 30              | 2 x 50                |
| Air consumption              | cc/cycle  | 3   | 9                   | 16.1                | 60.7                | 188.5                 |
| Max. Gripping Point          | mm        | 40  | 60                  | 80                  | 120                 | 160                   |
| Repeat Accuracy              |           | 0.1(After first 100 cycle) / 0.2(after 1 mil cycle) |                     |                     |                     |                       |
| Frequency                    | cycle/min | 60  | 50                  | 50                  | 40                  | 30                    |
| Gripping force <sup>*2</sup> | N         | 124.0xP / 1+0.009xL                                 | 222.9xP / 1+0.008xL | 299.9xP / 1+0.006xL | 754.7xP / 1+0.004xL | 1,460.4xP / 1+0.003xL |
| Weight                       | kg        | 0.32  | 0.53                | 1.21                | 2.83                | 5.28                  |

### Remark

1. 2 x 1 Jaw stroke
2. P = MPa , L = mm

## How to order



### 1. Cylinder bore size

- : Ø12
- : Ø16
- : Ø20
- : Ø30
- : Ø40

### 2. Jaw direction

- : Vertical
- : 90°

### 3. Type

- : Standard
- : Long stroke<sup>\*1</sup>

### 4. Sensor

- : None
- : D-A90K
- : D-A93K
- : D-A96K
- : D-A93K-S
- : D-F9NK
- : D-F9PK
- : D-F9BK
- : D-F9NK-S
- : D-F9PK-S
- : D-F9BK-S

### 5. Quantity of sensor parts

- : Quantity of sensor

### 6. Option

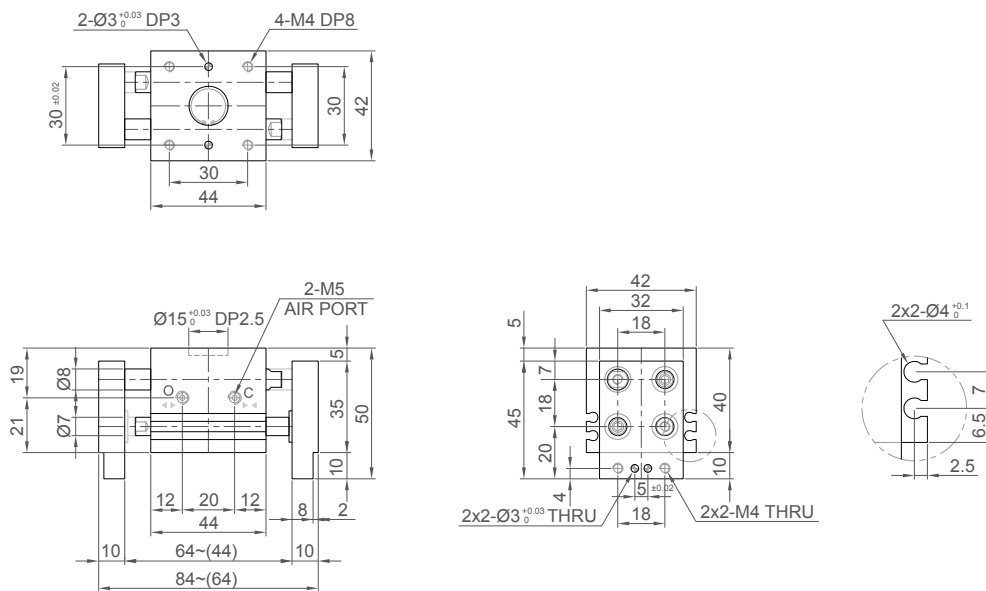
- : None
- : Washer on piston & guide rod to increase bolt tightening<sup>\*2</sup>

#### Remark

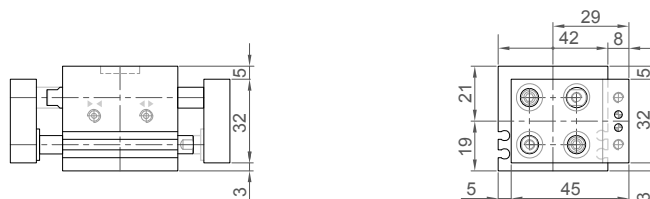
1. Caution for stroke extension as the guide rack will be exposed to foreign materials and accident might occur due to the extruded guide rack.
2. Bolt head will slightly exceed the JAW surface when washer is added.

# Dimensions

## KBG12KA

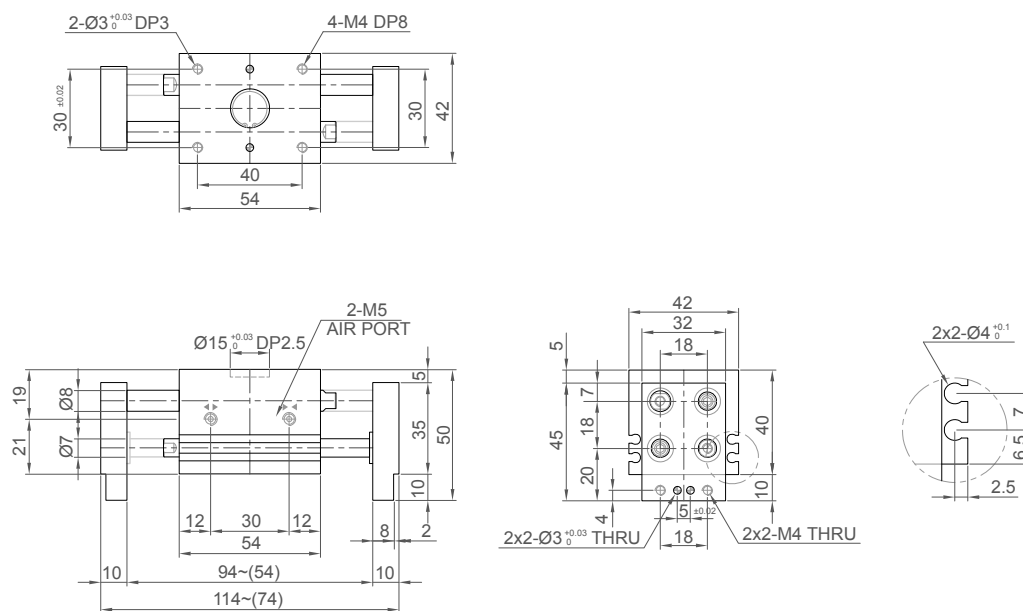


## KBG12KB

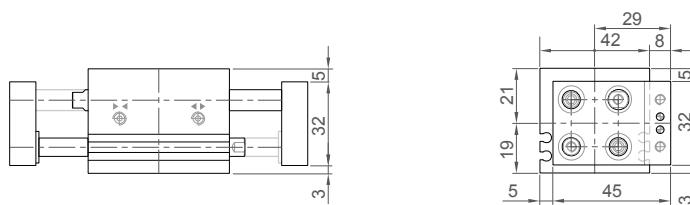


# Dimensions

## KBG12KA-S40 (Long stroke)

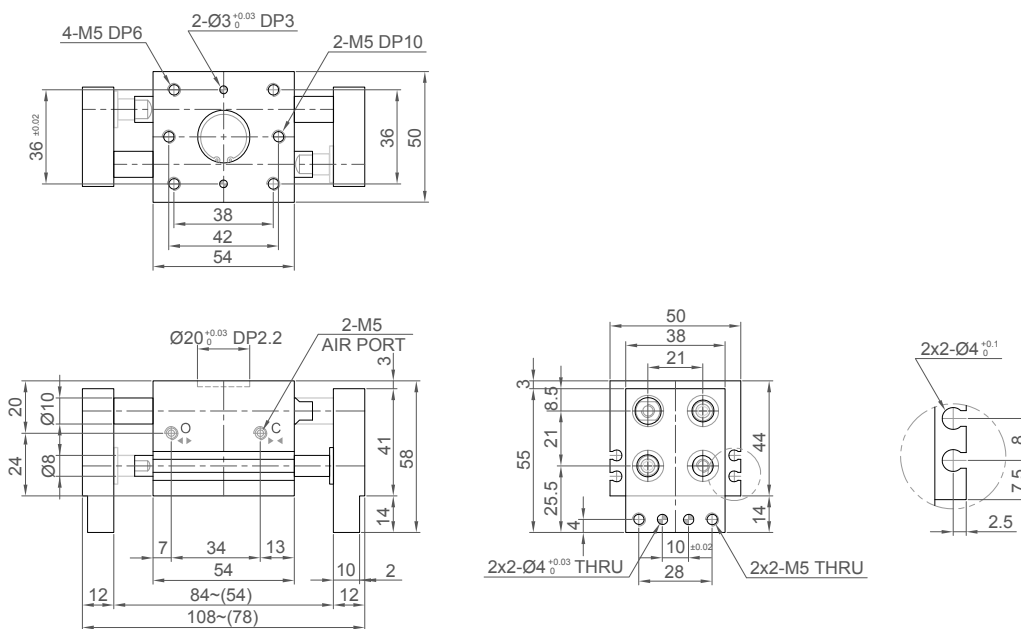


## KBG12KB-S40 (Long stroke)

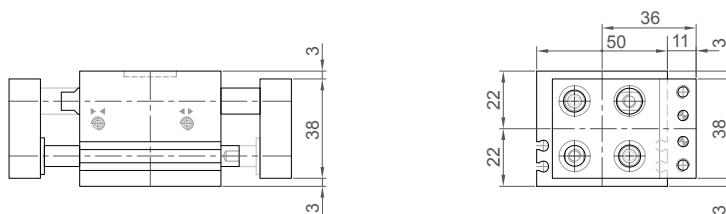


# Dimensions

## KBG16KA

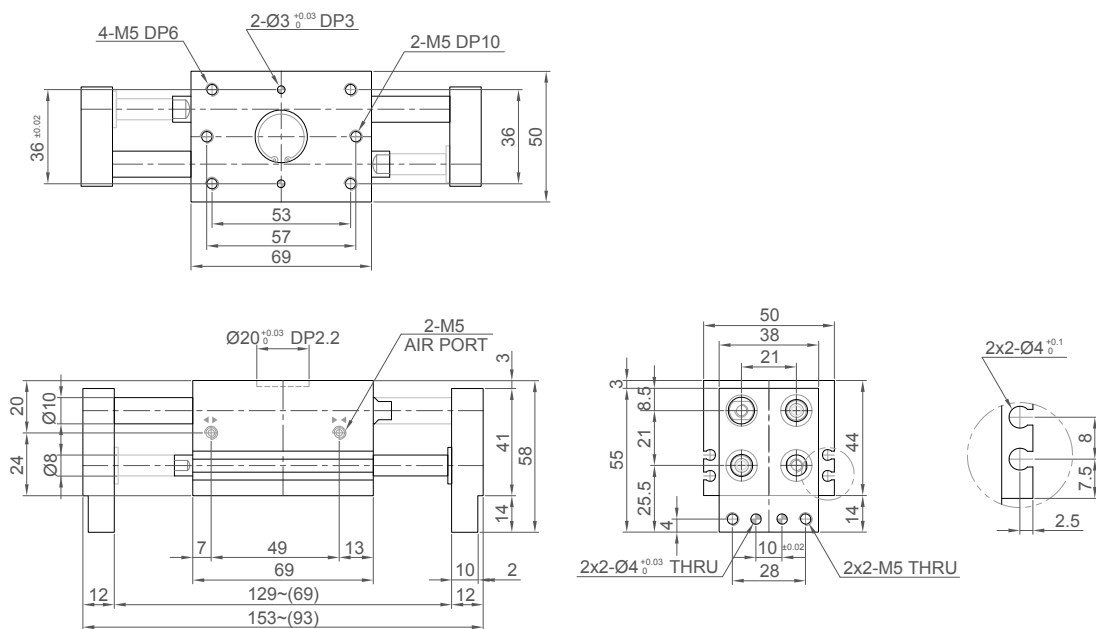


## KBG16KB

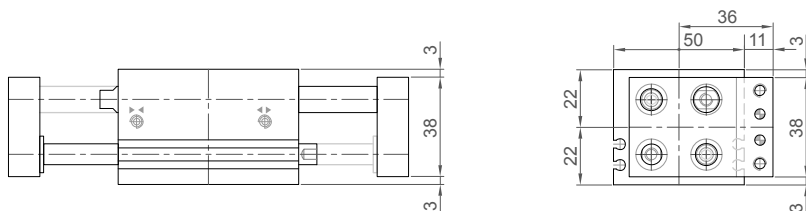


# Dimensions

## KBG16KA-S60 (Long stroke)

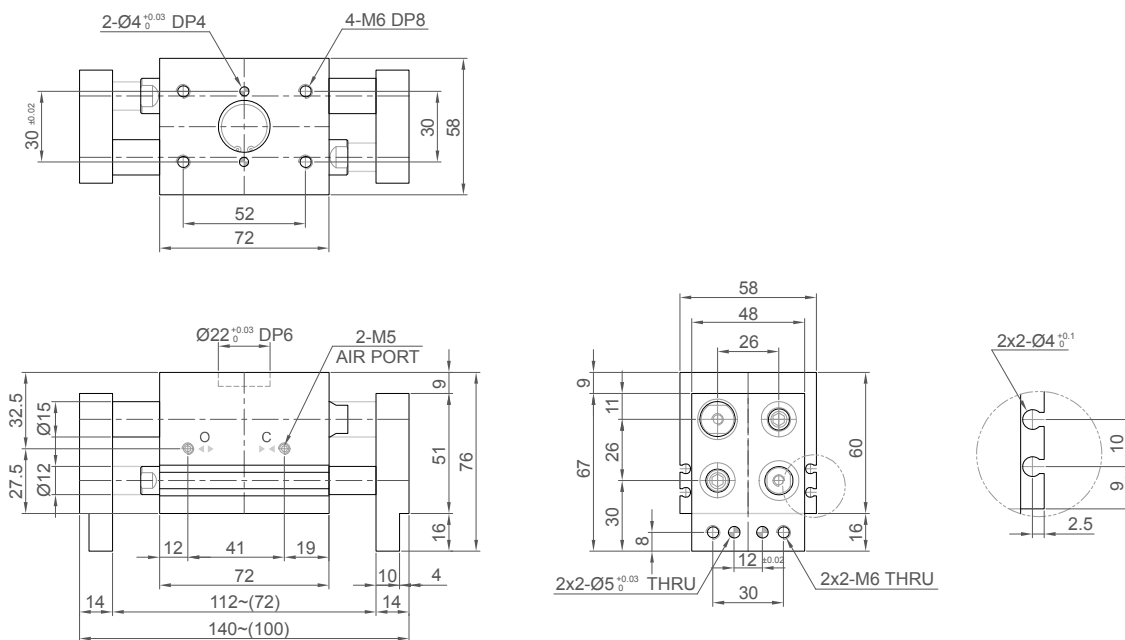


## KBG16KB-S60 (Long stroke)

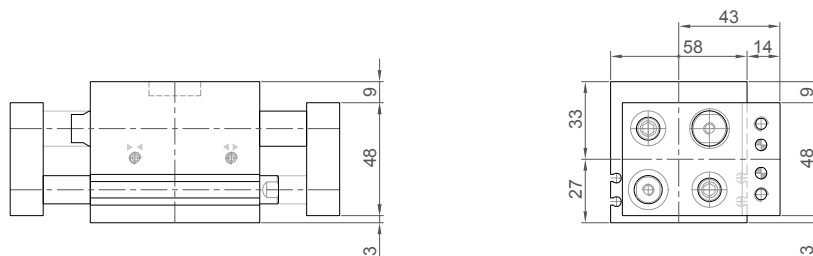


# Dimensions

## KBG20KA



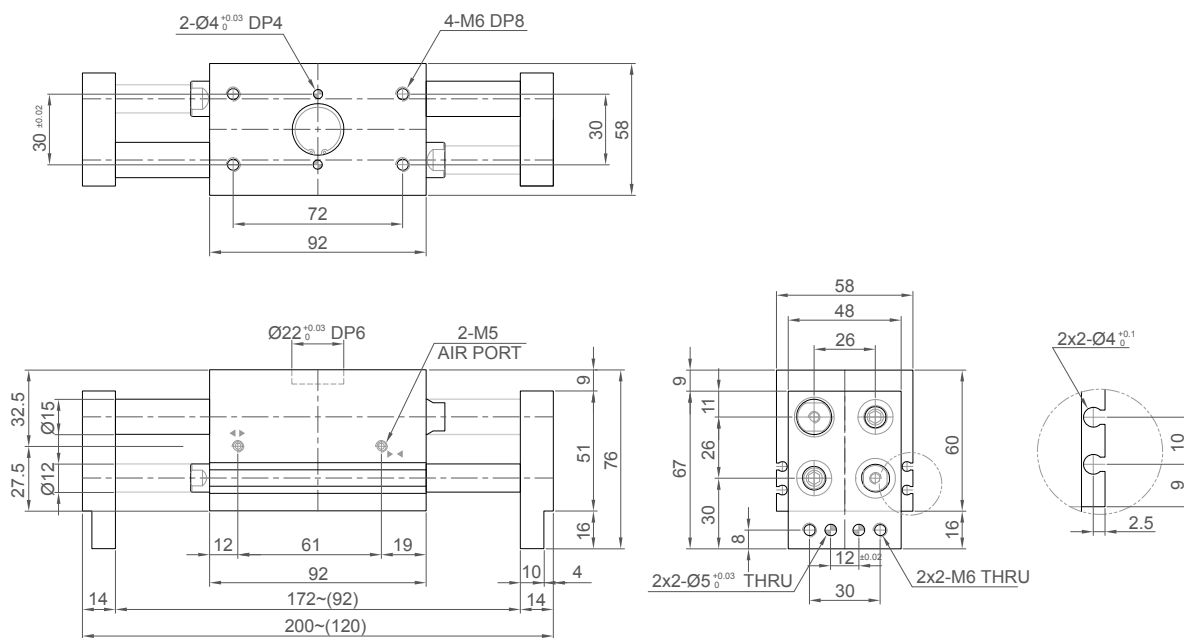
## KBG20KB



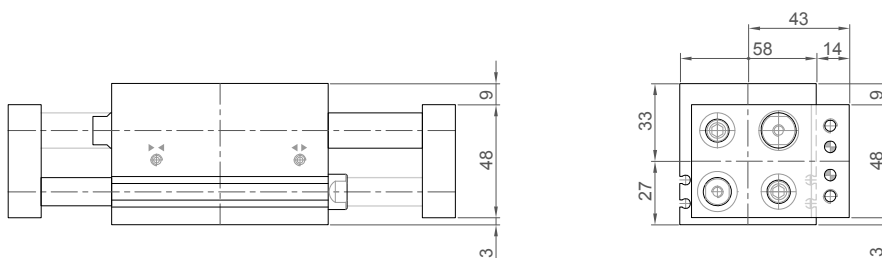


# Dimensions

## KBG20KA-S80 (Long stroke)

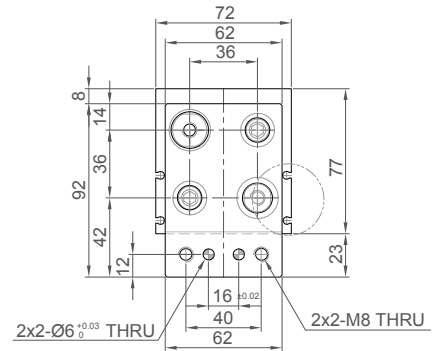
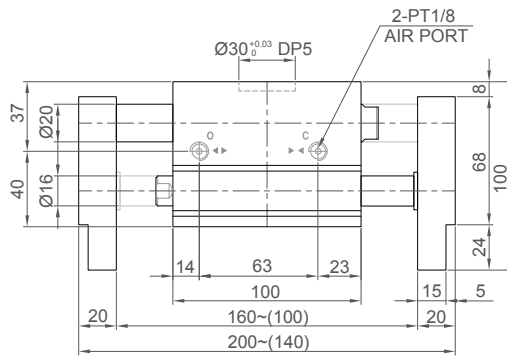
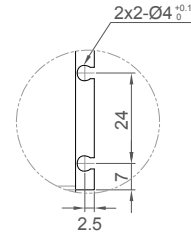
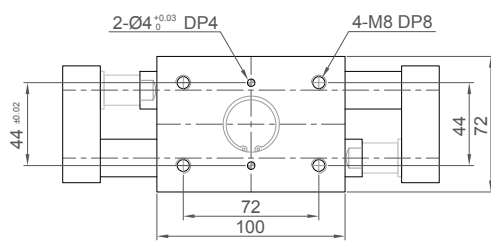


## KBG20KB-S80 (Long stroke)

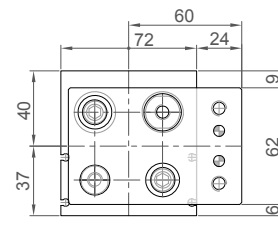
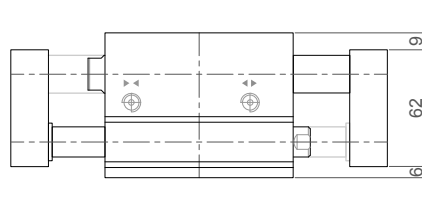


# Dimensions

## KBG30KA

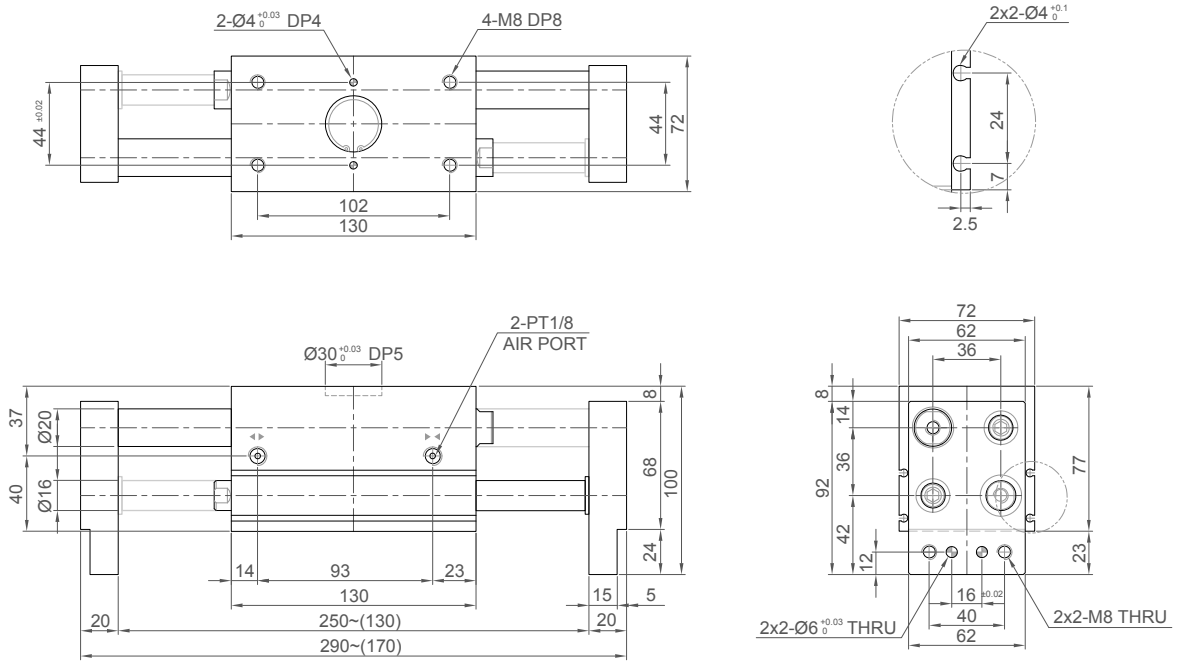


## KBG30KB

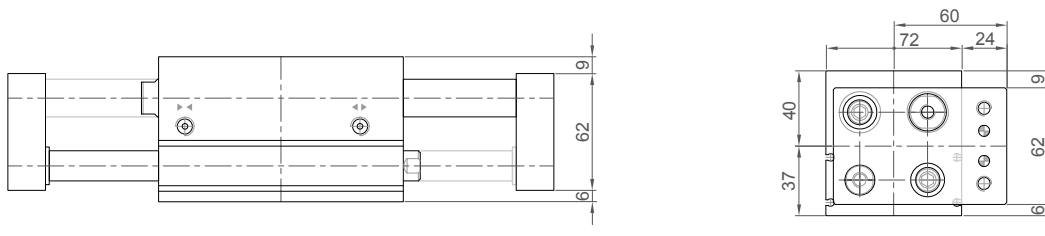


# Dimensions

## KBG30KA-S120 (Long stroke)



## KBG30KB-S120 (Long stroke)



# Dimensions

## KBG40K

