

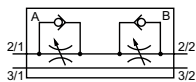
### Technical details

<b>Connection</b>	Namur
<b>Nominal size</b>	5 mm
<b>Flow rate</b>	KN-063: 210 NI/min, KN-065: 290 NI/min
<b>Weight</b>	0.170 kg
<b>Temperature range</b>	-25°C ... +70°C
<b>Medium</b>	Filtered, oil-free and dried compressed air according to ISO 8573-1:2010, Class 7:2:4, instrument air, free of aggressive additives. Alternatively the pressure dew point must be at least 10°C below lowest occurring ambient temperature.
<b>Materials</b>	Body: Al (anodized) seals: NBR inner parts: brass
	Valves in accordance with 2014/34/EU (ATEX) available. (Chapter 13)

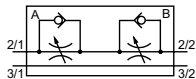


Flow control valves for speed regulation of pneumatically operated actuators. Mounting between NAMUR valve and actuator. Adjustable with screwdriver or manually. The location pin, screws and seals are included.

### 3/2-way

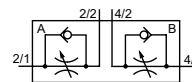


**KN-063-DRS**  
for 3/2-way-valves,  
adjustable with screwdriver

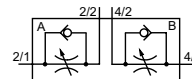


**KN-063-DRH**  
for 3/2-way-valves,  
manually adjustable

### 5/2- and 5/3-way



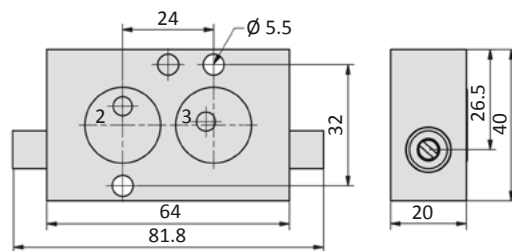
**KN-065-DRS**  
for 5/2-way- and 5/3-way-valves,  
adjustable with screwdriver



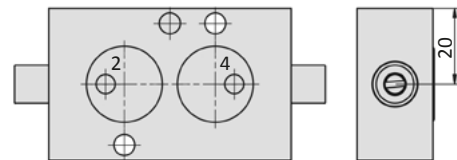
**KN-065-DRH**  
for 5/2-way- and 5/3-way-valves,  
manually adjustable

### Dimensions

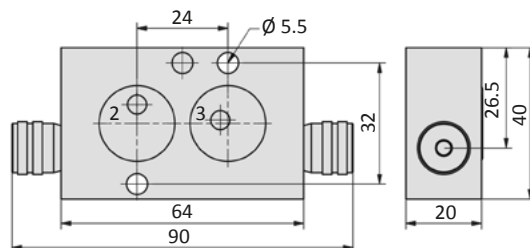
#### KN-063-DRS



#### KN-065-DRS



#### KN-063-DRH



#### KN-065-DRH

